

CHAPTER 4. PARTS CATALOG

CONTENTS

PowerShot S45	
Casing Parts	Pg1
Internal Parts-1	Pg2
Internal Parts-2	Pg3
Accessories-1	Pg4
Accessories-2	Pg5
Accessories-3	Pg6
Service Tools	Pg7

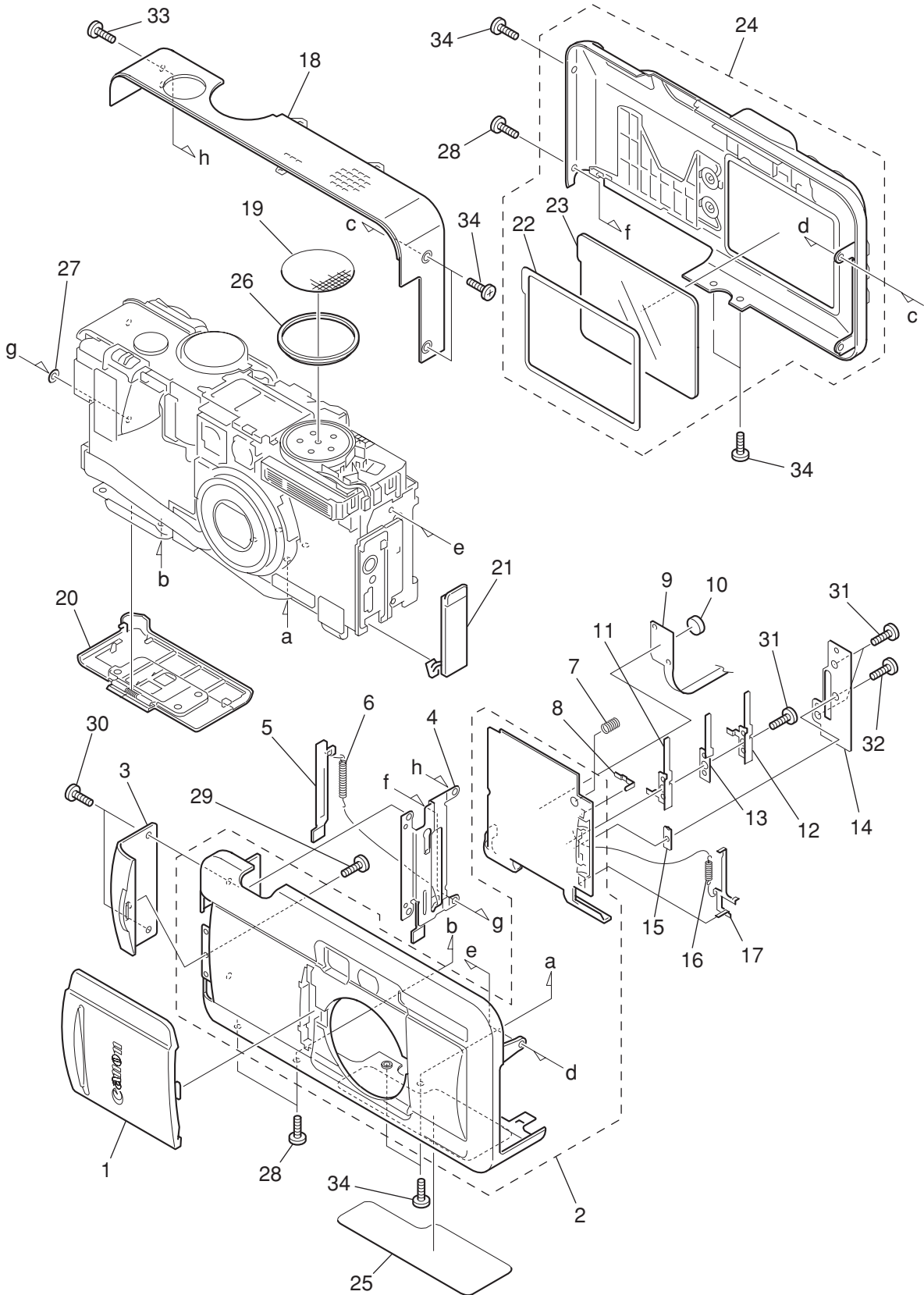
CLASS凡例

- A: 使用頻度 高
- B: 使用頻度 中
- C: 使用頻度 低
- D: 安全規格部品
- E: 消耗部品
- F: 標準ネジ、ワッシャー
- S: 供給制限品

Category of CLASS

- A: Frequency of use: High
- B: Frequency of use: Middle
- C: Frequency of use: Low
- D: Safety-related critical parts
- E: Consumable parts
- F: Standard screws and washers
- S: Supply of the parts is limited

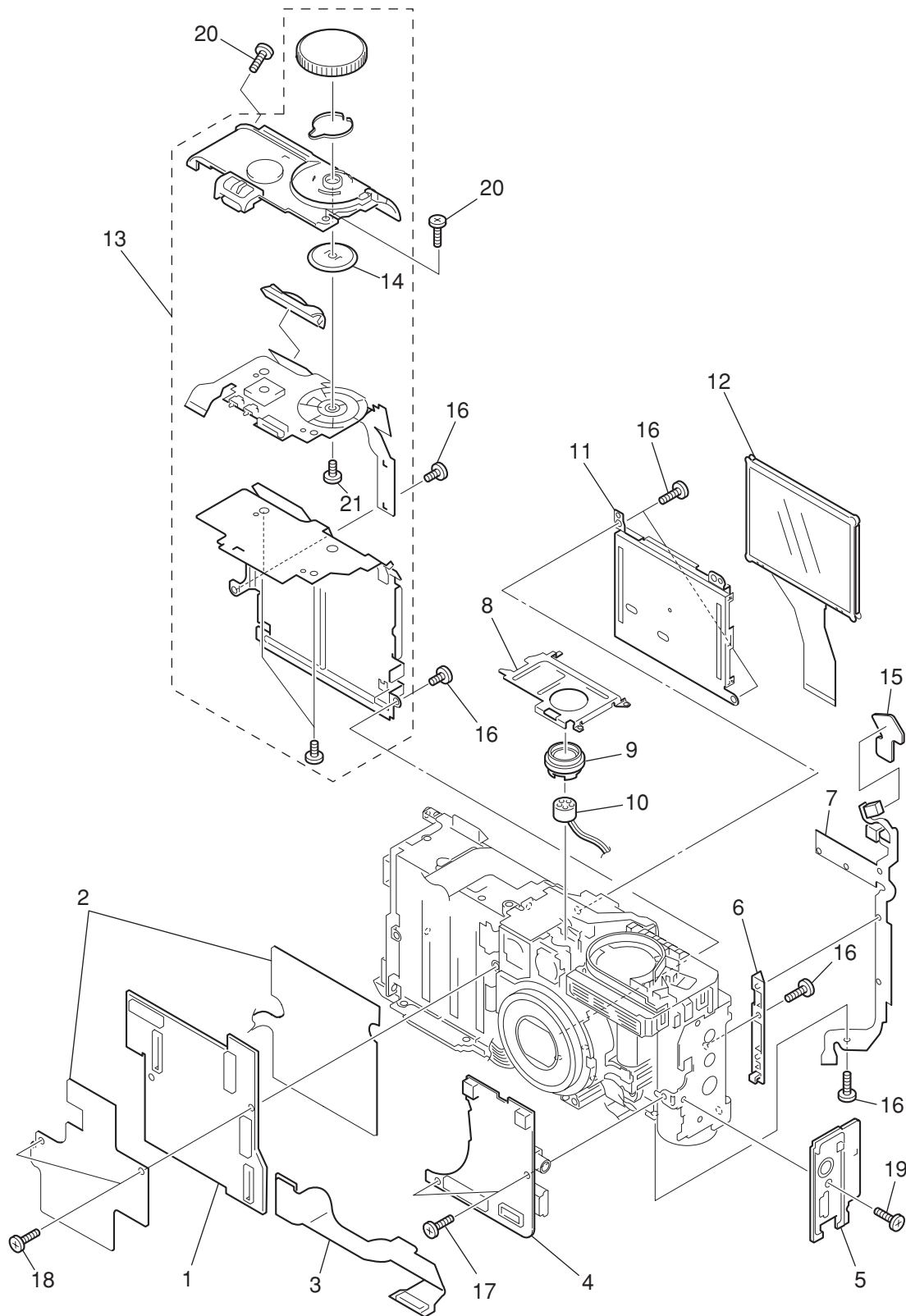
Casing Parts



PARTS LIST

SYMBOL	PARTS NO.	CLASS	QTY	DESCRIPTION	REMARKS
1	CM1-1521-000	B	1	BARRIER UNIT	
2	CM1-1532-000	B	1	FRONT COVER UNIT	
3	CD1-4869-000	B	1	BASE, STRAP	
4	CD1-3919-000	C	1	PLATE, LEFT	
5	CD1-4867-000	B	1	BARRIER, DC	
6	CS8-5250-000	C	1	SPRING, DC BARRIER	
7	CS8-5252-000	C	1	SPRING, FRONT GRAND	
8	CD1-3920-000	C	1	PIN, BAR DETECT	
9	CM1-1211-000	C	1	BARRIER FPC UNIT	
10	WK1-5140-000	C	1	BATTERY, LITHIUM (2ND)	
11	CD1-3921-000	C	1	PLATE, BAR DETECT 1	
12	CD1-3922-000	C	1	PLATE, BAR DETECT 2	
13	CD1-3923-000	C	1	SPACER, BAR E	
14	CD1-3912-000	C	1	PLATE, BAR PLANE	
15	CD1-3911-000	C	1	SPACER, BAR	
16	CS8-5251-000	C	1	SPRING, BAR LOCK LEV	
17	CD1-3913-000	C	1	PLATE, BAR LOCK	
18	CM1-1537-000	B	1	TOP COVER UNIT	
19	CD1-3964-010	C	1	SHEET, SPEAKER	
20	CM1-1533-000	B	1	BOTTOM LID UNIT	
21	CD1-4862-000	B	1	COVER, JACK	
22	CD1-3938-000	C	1	SPACER, LCD	
23	CD1-3906-010	B	1	WINDOW, LCD	
24	CM1-1535-000	B	1	REAR COVER UNIT	
25	CY1-6192-000	B	1	PLATE, BODY NUMBER (J)	FOR JAPAN
	CY1-6193-000	B	1	PLATE, BODY NUMBER (N)	FOR USA/CANADA
	CY1-6194-000	B	1	PLATE, BODY NUMBER (E)	FOR EUROPE
26	CD1-3908-000	C	1	BUSH, SPEAKER	
27	CD1-4992-000	F	1	WASHER	
28	CD1-4897-000	F	3	SCREW	
29	XA1-7170-257	F	1	SCREW	
30	CD1-4045-000	F	2	SCREW	
31	XA4-9140-307	F	3	SCREW	
32	XA1-7140-287	F	1	SCREW	
33	XA4-9170-359	F	1	SCREW	
34	CD1-4896-000	F	7	SCREW	

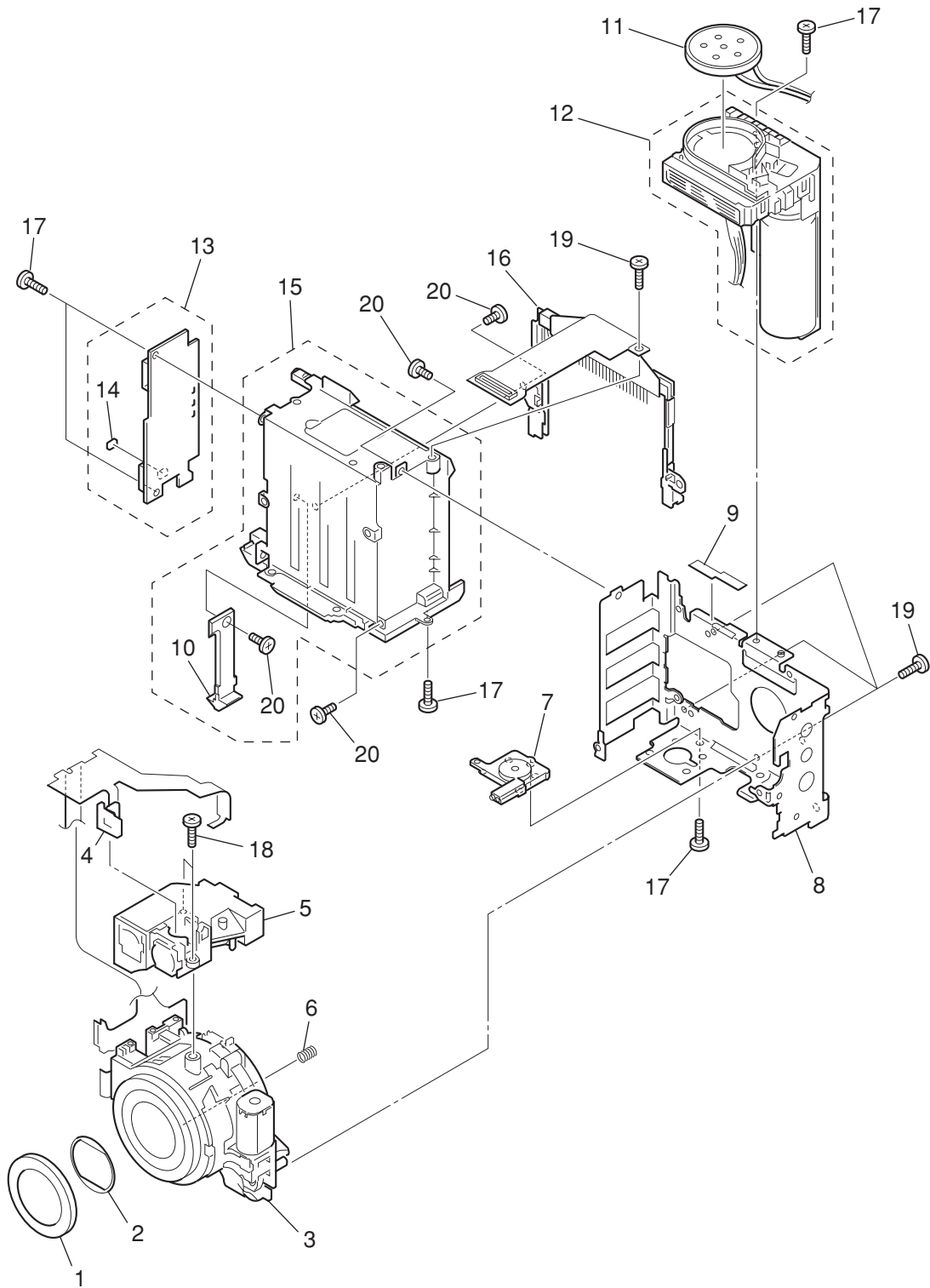
Internal Parts-1



PARTS LIST

SYMBOL	PARTS NO.	CLASS	QTY	DESCRIPTION	REMARKS
1	CM1-1558-000	C	1	PCB ASS'Y, MAIN	
2	CD1-4874-000	C	1	SHEET, MAIN	
3	CM1-1554-000	C	1	MJ MODULE UNIT	
4	CM1-1553-000	C	1	PCB ASS'Y, JAL	
5	CD1-4603-000	C	1	BASE, JACK	
6	CD1-3903-000	C	1	BASE, RSW	
7	CM1-1557-000	C	1	SW MODULE UNIT	
8	CD1-3904-010	C	1	FRAME, TOP	
9	CD1-3909-000	C	1	HOLDER, MICROPHONE	
10	CM1-1215-000	C	1	MICROPHONE UNIT	
11	CM1-1230-000	C	1	BACK LIGHT UNIT	
12	WG2-5233-000	C	1	PANEL, LCD	
	WG2-5233-001	C	1	PANEL, LCD (SELECTION)	
13	CM1-1528-000	B	1	OPERATION BASE UNIT	
14	CL1-1060-000	C	1	BRUSH UNIT	
15	CD1-4592-000	C	1	SHIELD, IR SENSOR	
16	XA1-7170-207	F	6	SCREW	
17	XA1-7170-307	F	2	SCREW	
18	FC2-8736-000	F	2	SCREW	
19	CD1-4896-000	F	1	SCREW	
20	XA4-9170-359	F	2	SCREW	
21	XA4-9170-357	F	1	SCREW	

Internal Parts-2

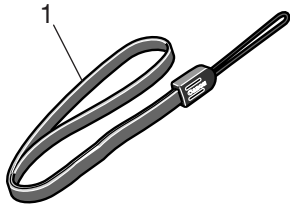


PARTS LIST

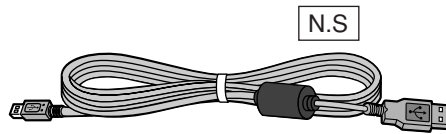
SYMBOL	PARTS NO.	CLASS	QTY	DESCRIPTION	REMARKS
1	CD1-3846-000	B	1	CAP, BARREL	
2	CD1-3845-000	B	1	CAP, FRONT	
3	CM1-1218-000	B	1	OPTICAL UNIT	
4	CD1-3869-000	C	1	HOLDER, LED	
5	CM1-1223-000	B	1	FINDER UNIT	
6	CS8-5209-000	C	1	SPRING, CCD	
7	CD1-3894-000	C	1	BASE, TRIPOD	
8	CD1-3888-000	C	1	FRAME, MAIN	
9	CD1-3965-000	C	1	SHEET, FRAME	
10	CD1-3914-010	B	1	LOCKER, BATTERY	
11	CM1-1561-000	C	1	SPEAKER UNIT	
12	CM1-1525-000	C	1	FLASH UNIT	
13	CM1-1560-000	C	1	PCB ASS'Y, DC/DC	
14	CY4-6072-000	C	1	FUSE, DAITO KE16	
15	CM1-1219-020	C	1	BATTERY BOX UNIT	
16	CM1-1210-000	C	1	CF UNIT	
17	XA1-7170-307	F	5	SCREW	
18	XA4-9140-507	F	2	SCREW	
19	XA4-9170-359	F	4	SCREW	
20	XA1-7170-207	F	3	SCREW	

Accessories-1

Wrist Strap WS-300

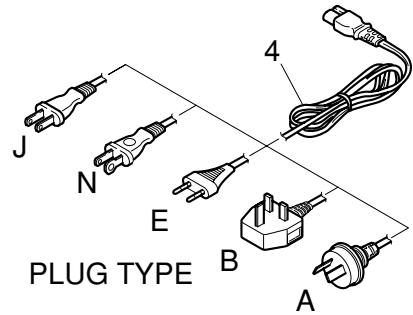


USB Interface Cable IFC-300PCU



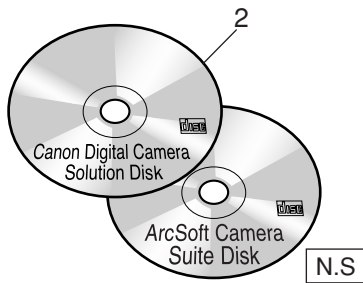
N.S

AC Cable



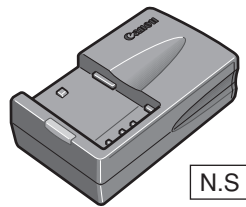
PLUG TYPE

Canon Digital Camera Solution Disk, ArcSoft Camera Suite Disk



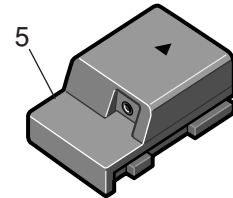
N.S

Battery Charger CB-2LT / CB-2LTE



N.S

DC Coupler DR-700

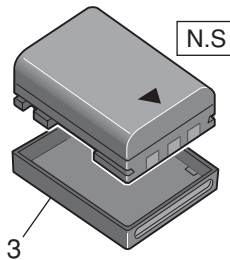


CF Card FC-32M



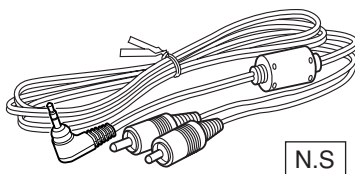
N.S

Battery Pack NB-2L



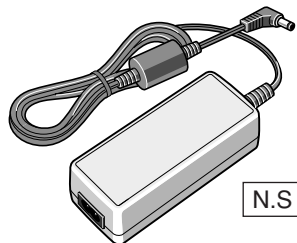
N.S

AV Cable AVC-DC100



N.S

Compact Power Adapter CA-PS700



N.S

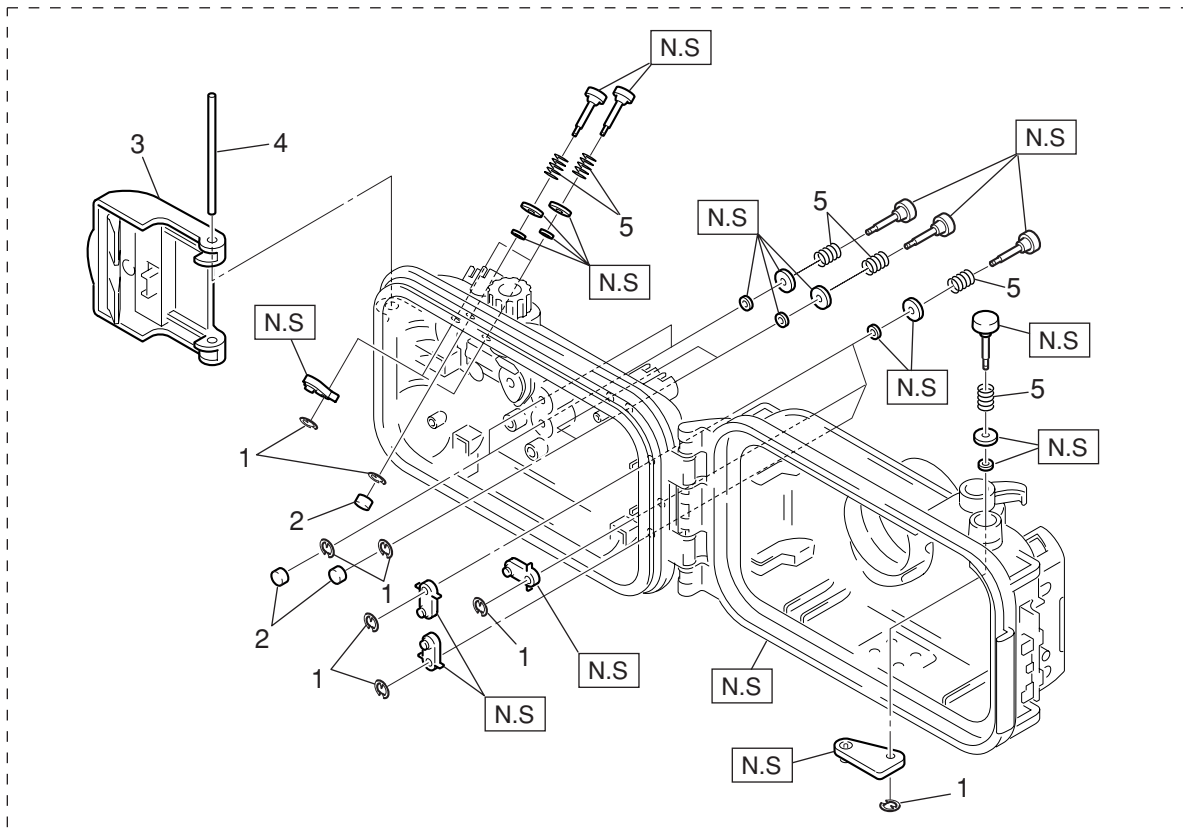
N.S : N.S Stand for No Stock (Product available)

PARTS LIST

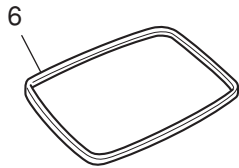
SYMBOL	PARTS NO.	CLASS	QTY	DESCRIPTION	REMARKS
1	C84-1082-000	B	1	STRAP, WRIST WS-300	
2	C84-1132-000	S	1	CD-ROM, SOLUTION VER.11 (J/E)	FOR JAPAN, ASIA, AUSTRALIA
	C84-1138-000	S	1	CD-ROM, SOLUTION VER.11 (E/F/S)	FOR USA, CANADA
	C84-1145-000	S	1	CD-ROM, SOLUTION VER.11 (J/E/C)	FOR ASIA, AUSTRALIA
3	CD1-4054-000	B	1	COVER, TERMINAL NB-2L	
4	D82-0641-000	C	1	CABLE, AC (J)	FOR JAPAN
	D82-0642-000	C	1	CABLE, AC (N)	FOR USA, CANADA
	D82-0643-000	C	1	CABLE, AC (E)	FOR EUROPE, ASIA
	D82-0644-000	C	1	CABLE, AC (B)	FOR ASIA
	D82-0645-000	C	1	CABLE, AC (A)	FOR AUSTRALIA
5	C84-1078-000	B	1	DC COUPLER DR-700	

Accessories-2

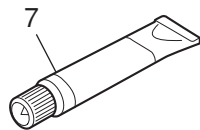
Waterproof Case WP-DC 300 N.S



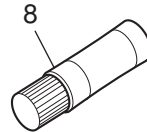
Waterproof Seal



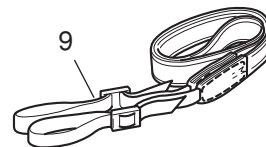
Silicone Grease



Anti-Condensation Solution



Neck Strap



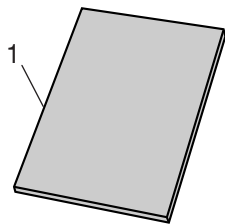
N.S : N.S Stand for No Stock (Product available)

PARTS LIST

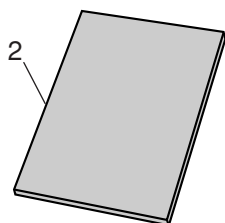
SYMBOL	PARTS NO.	CLASS	QTY	DESCRIPTION	REMARKS
1	CY1-6168-000	C	11	E RING	
2	CY1-6169-000	C	5	CAP, BUTTON	
3	CY1-6171-000	C	1	BUCKLE ASS'Y	
4	CY1-6203-000	C	1	SHAFT, BUCKLE	
5	CY1-6167-000	C	11	SPRING, COIL	
6	CY1-6100-000	B	1	PACKING, RUBBER	
7	DY9-3029-000	C	1	GREASE, PACKING	
8	DY9-3028-000	C	1	CLEANER, ANTI-FOGGING LIQUID	
9	CY1-6099-000	B	1	STRAP, NECK	

Accessories-3

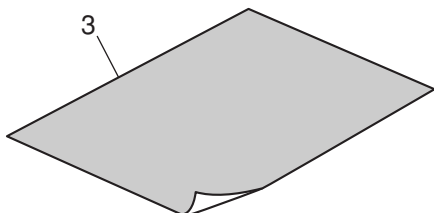
Camera User Guide



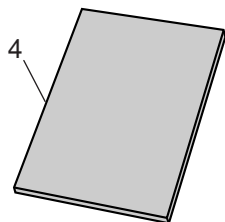
Software Starter Guide



System Map



Quick Start Guide



PARTS LIST

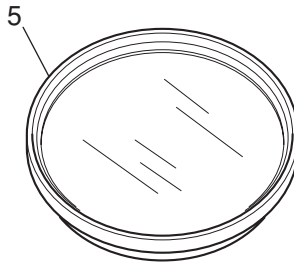
SYMBOL	PARTS NO.	CLASS	QTY	DESCRIPTION	REMARKS
1	CDI-J055-000	S	1	I.BOOK (J) PS S45	FOR JAPAN
	CDI-E064-000	S	1	I.BOOK (E) PS S45	FOR USA/CANADA/ASIA/ AUSTRALIA
	CDI-F053-000	S	1	I.BOOK (F) PS S45	FOR CANADA
	CDI-S054-000	S	1	I.BOOK (S) PS S45	FOR USA
2	CDI-J062-000	S	1	SOFTWARE GUIDE (J) VER.11	FOR JAPAN
	CDI-E071-000	S	1	SOFTWARE GUIDE (E) VER.11	FOR USA/CANADA/ASIA/ AUSTRALIA
	CDI-F060-000	S	1	SOFTWARE GUIDE (F) VER.11	FOR CANADA
	CDI-S061-000	S	1	SOFTWARE GUIDE (S) VER.11	FOR USA
3	CDI-J056-000	S	1	SYSTEM MAP (J) PS S45	FOR JAPAN
	CDI-E065-000	S	1	SYSTEM MAP (E) PS S45	FOR USA/CANADA/ASIA/ AUSTRALIA
	CDI-F054-000	S	1	SYSTEM MAP (F) PS S45	FOR CANADA
	CDI-S055-000	S	1	SYSTEM MAP (S) PS S45	FOR USA
4	CDI-J057-000	S	1	QUICK START GUIDE (J)	FOR JAPAN
	CDI-E066-000	S	1	QUICK START GUIDE (E)	FOR USA/CANADA/ASIA/ AUSTRALIA
	CDI-F055-000	S	1	QUICK START GUIDE (F)	FOR CANADA
	CDI-S056-000	S	1	QUICK START GUIDE (S)	FOR USA

Service Tools

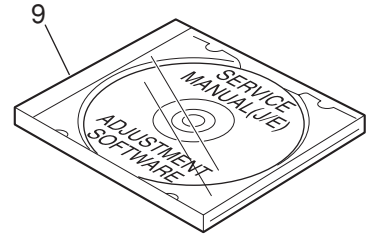
DIA BOND NO.1663G BLACK



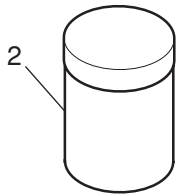
C-12 Filter



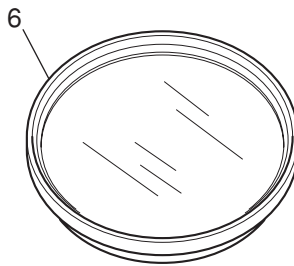
Service Manual & Adjustment Software CD-ROM



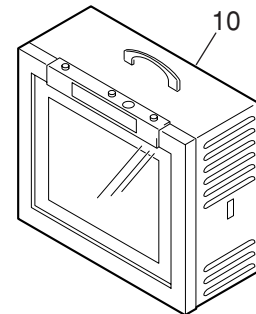
LOGENEST RAMBDA A-74



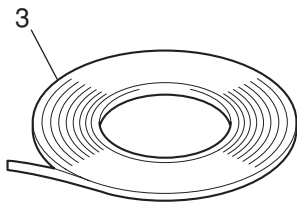
W-10 Filter



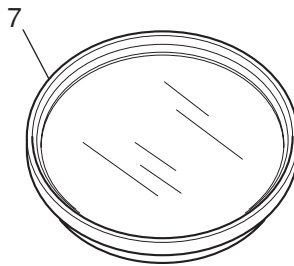
Color Viewer (5600° K)



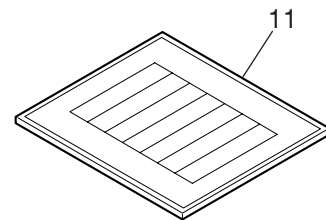
Adhesive Tape SONY T4000



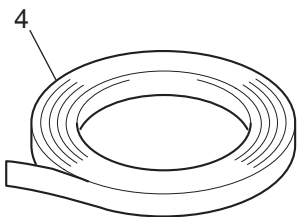
FL-W Filter



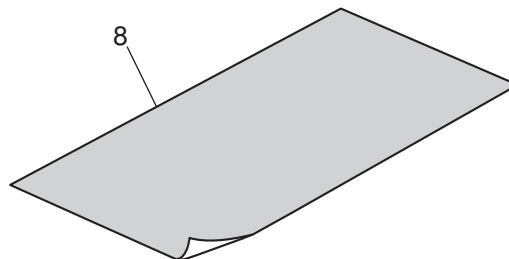
Standard Color Bar Chart



Adhesive Tape 3M NO.56



18% Gray Chart



PARTS LIST

SYMBOL	PARTS NO.	CLASS	QTY	DESCRIPTION	REMARKS
1	CY9-8129-000	Y	1	BOND, DIA BOND NO.1663G BLACK	
2	CY9-8102-000	Y	1	LUBE, LOGNEST RAMBDA A-74	80g
3	CY4-6012-000	Y	1	ADHESIVE TAPE, SONY T4000	6mm × 50m Roll
4	CY4-6018-000	Y	1	ADHESIVE TAPE, 3M NO.56	15mm × 66m Roll
5	DY9-2029-000	Y	1	FILTER, C-12	
6	CY9-1543-000	Y	1	FILTER, W-10	
7	CY9-1550-000	Y	1	FILTER, FL-W	
8	CY4-6016-000	Y	1	CHART, 18% GRAY	
9	CY8-4379-031	Y	1	CD-ROM, SERVICE MANUAL (J/E)	
10	DY9-2039-100	Y	1	COLOR VIEWER 5600K	
11	DY9-2002-000	Y	1	COLOR BAR CHART	