

CHAPTER 4. PARTS CATALOG

CONTENTS

PowerShot S330/DIGITAL IXUS 330/IXY DIGITAL 300a

Casing Parts ----- Pg1

Internal Parts-1 ----- Pg2

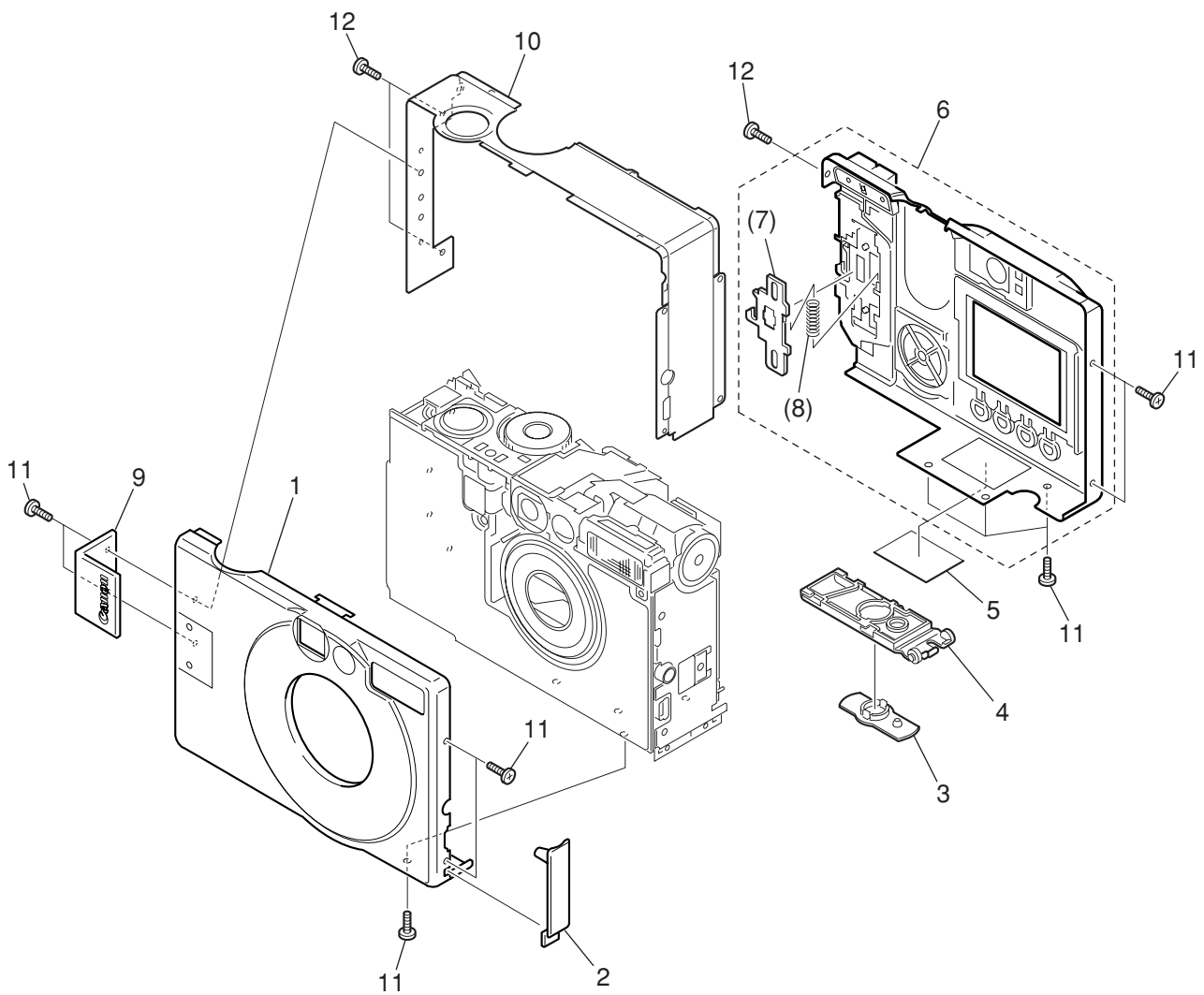
Internal Parts-2 ----- Pg3

OPTICAL UNIT ----- Pg4

Accessories ----- Pg5

Service Tools----- Pg8

Casing Parts



PARTS LIST

SYMBOL	PARTS NO.	CLASS	QTY	DESCRIPTION	REMARKS
1	CM1-1411-000	B	1	FRONT COVER UNIT	POWERSHOT S330
	CM1-1412-000	B	1	FRONT COVER UNIT	DIGITAL IXUS 330
	CM1-1407-000	B	1	FRONT COVER UNIT	IXY DIGITAL 300a
2	CD1-3688-000	B	1	COVER, JACK	
3	CD1-3689-000	B	1	COVER, DC COUPLER	
4	CD1-3687-000	B	1	COVER, BATTERY	
5	CY1-6155-000	B	1	PLATE, BODY NUMBER	
6	CM1-1408-000	B	1	REAR COVER UNIT	
7	CD1-3644-000	C	1	LOCK, CF COVER	
8	CS8-5208-000	C	1	SPRING, LOCK	
9	CD1-4302-000	B	1	RING, STRAP	
10	CL1-1087-000	B	1	CENTER COVER UNIT	POWERSHOT S330
	CL1-1088-000	B	1	CENTER COVER UNIT	DIGITAL IXUS 330
	CL1-1086-000	B	1	CENTER COVER UNIT	IXY DIGITAL 300a
11	CD1-3111-000	F	10	SCREW	
12	CB1-8788-000	F	3	SCREW	

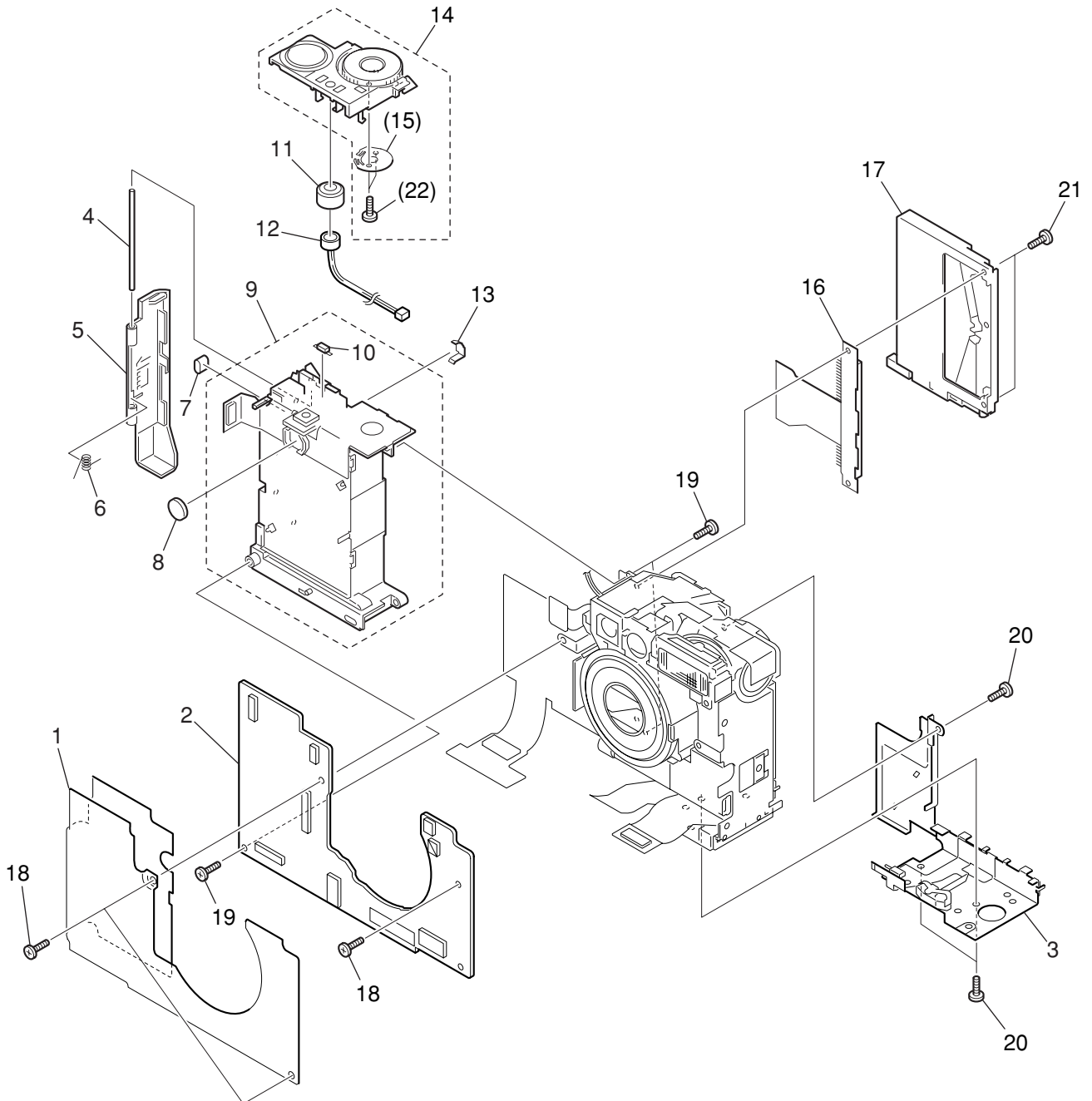
CLASS凡例

- A: 使用頻度 高
- B: 使用頻度 中
- C: 使用頻度 低
- D: 安全規格部品
- E: 消耗部品
- F: 標準ネジ、ワッシャー
- S: 供給制限品

Category of CLASS

- A: Frequency of use: High
- B: Frequency of use: Middle
- C: Frequency of use: Low
- D: Safety-related critical parts
- E: Consumable parts
- F: Standard screws and washers
- S: Supply of the parts is limited

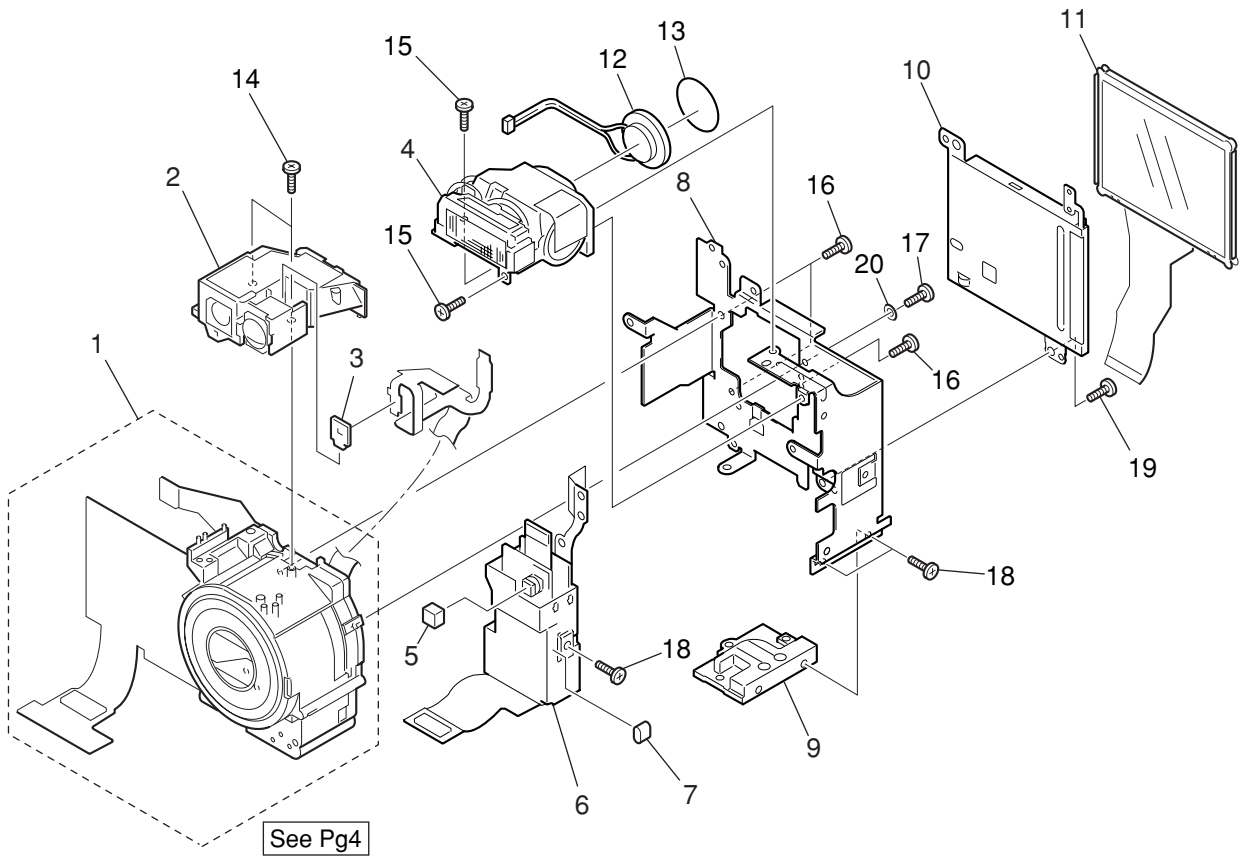
Internal Parts-1



PARTS LIST

SYMBOL	PARTS NO.	CLASS	QTY	DESCRIPTION	REMARKS
1	CL1-1035-000	C	1	SHEET, SHIELD	
2	CM1-1403-000	C	1	PCB ASS'Y, MAIN	
3	CM1-1405-000	C	1	OPERATION KEY UNIT	
4	CD1-3647-000	C	1	SHAFT, CF	
5	CD1-3646-000	B	1	COVER, CF	
6	CS8-6156-000	C	1	SPRING, CF	
7	CK2-1220-000	C	1	GASKET (CIRCUIT PROTECTER)	
8	WK1-5132-000	C	1	BATTERY, LITHIUM (2ND)	
9	CM1-1417-000	C	1	BATTERY BOX UNIT	
10	WD1-5064-000	C	1	FUSE, MATSU.DENKI UNHH206	
11	CD1-3663-000	C	1	BUSH, MIC.	
12	CM1-1193-000	C	1	MICROPHONE UNIT	
13	CD1-3701-000	C	1	CLIP, MODE	
14	CM1-1410-000	B	1	MODE BASE UNIT	
15	CD1-3656-000	C	1	BRUSH, MODE	
16	CM1-1406-001	C	1	CF FPC UNIT	
17	WS3-5698-000	C	1	CF EJECT UNIT	
18	XA1-7170-357	F	3	SCREW	
19	XA4-9170-359	F	3	SCREW	
20	CD1-3108-000	F	3	SCREW	
21	CD1-3105-000	F	2	SCREW	
22	XA4-9140-207	F	2	SCREW	

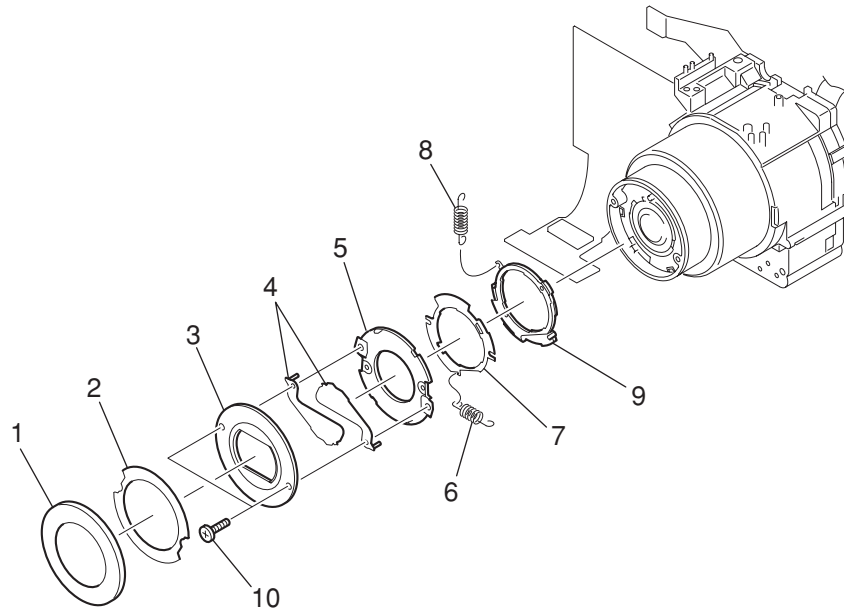
Internal Parts-2



PARTS LIST

SYMBOL	PARTS NO.	CLASS	QTY	DESCRIPTION	REMARKS
1	CM1-1416-000	B	1	OPTICAL UNIT	
2	CM1-1144-000	B	1	FINDER UNIT	
3	CD1-3565-000	C	1	HOLDER, LED	
4	CM1-1414-000	B	1	FLASH UNIT	
5	CB1-8846-000	C	1	CAP, TRIGGER	
6	CM1-1401-000	C	1	DC/DC CONVERTER UNIT	
7	CK2-1220-000	C	1	GASKET (CIRCUIT PROTECTOR)	
8	CD1-4295-000	C	1	FRAME, MAIN	
9	CD1-3685-010	C	1	BASE, TRIPOD	
10	CM1-1409-000	C	1	BACK LIGHT UNIT	
11	WG2-5227-000	C	1	PANEL, LCD	
	WG2-5227-001	C	1	PANEL, LCD (SELECTION)	
12	CM1-1418-000	C	1	SPEAKER UNIT	
13	CD1-4320-000	C	1	CLOTH	
14	XA4-9140-359	F	2	SCREW	
15	XA1-7170-307	F	2	SCREW	
16	XA4-5170-309	F	3	SCREW	
17	CD1-3553-000	F	1	SCREW	
18	XA1-7170-357	F	3	SCREW	
19	CD1-3108-000	F	1	SCREW	
20	CD1-3554-000	F	1	WASHER, WAVE	

OPTICAL UNIT

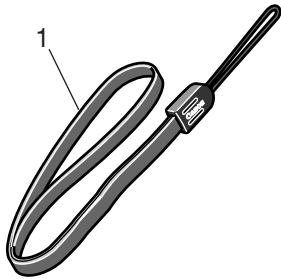


PARTS LIST

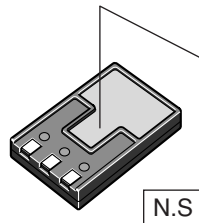
SYMBOL	PARTS NO.	CLASS	QTY	DESCRIPTION	REMARKS
1	CD1-4309-000	B	1	CAP, BARREL 1	
2	CD1-3595-000	B	1	ADHESIVE TAPE, FRONT	
3	CD1-3577-000	B	1	CAP, FRONT	
4	CD1-3574-000	B	2	PLATE, BARRIER	
5	CD1-3579-000	C	1	BASE, BARRIER	
6	CS8-5236-000	C	1	SPRING, BARRIER CLOSE	
7	CD1-3575-000	C	1	PLATE, BARRIER DRIVE	
8	CS8-5235-000	C	1	SPRING, BARRIER OPEN	
9	CD1-3576-000	C	1	RING, BARRIER DRIVE	
10	XA4-5140-357	F	1	SCREW	

Accessories-1

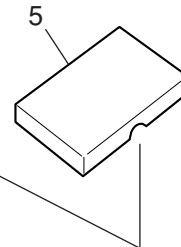
Wrist Strap WS-110



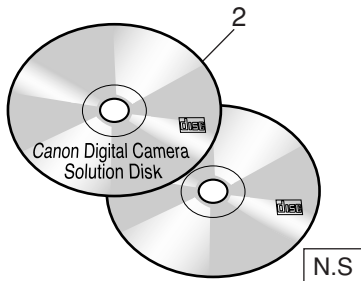
Battery Pack NB-1LH



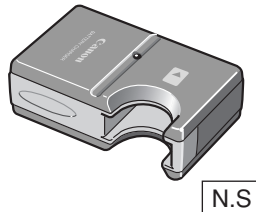
**TERMINAL COVER
NB-1LH**



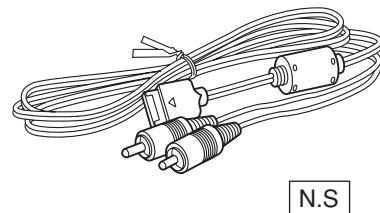
**Canon Digital Camera
Solution Disk,
ArcSoft Camera Suite Disk**



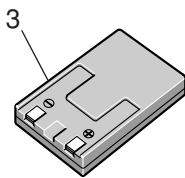
**Battery Charger
CB-2LS/2LSE**



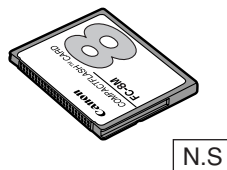
AV Cable AVC-DC100



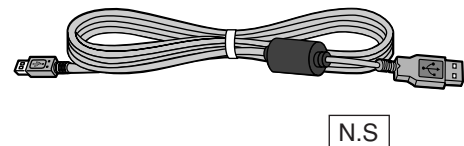
DC Coupler DR-500



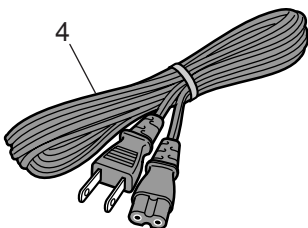
CF Card FC-8M



**USB Interface Cable
IFC-300PCU**



AC Cable



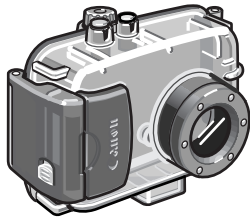
N.S: N.S Stand for No Stock (Product available)

PARTS LIST

SYMBOL	PARTS NO.	CLASS	QTY	DESCRIPTION	REMARKS
1	CD1-3113-000	B	1	WRIST STRAP WS-110	
2	C84-1113-000	S	1	CD-ROM, SOLUTION DISK Ver.9.0 (J, E)	FOR JAPAN ASIA AUSTRARIA
	C84-1114-000	S	1	CD-ROM, SOLUTION DISK Ver.9.0 (E/F/S)	FOR USA, CANADA
3	C84-1044-000	B	1	DC COUPLER DR-500	
4	WT3-5062-000	C	1	AC CABLE (J)	FOR JAPAN
	WT3-5063-000	C	1	AC CABLE (N)	FOR USA, CANADA
	WT3-5064-000	C	1	AC CABLE (E)	FOR EUROPE, ASIA
	WT3-5115-000	C	1	AC CABLE (B)	FOR ASIA
	WT3-5066-000	C	1	AC CABLE (A)	FOR AUSTRARIA
5	CD1-4329-000	B	1	COVER, TERMINAL	

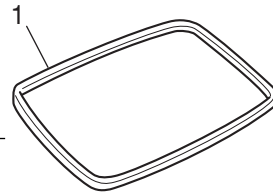
Accessories-2

Waterproof Case WP-DC500

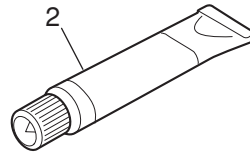


N.S

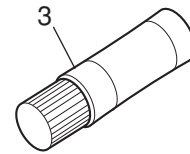
Waterproof Seal



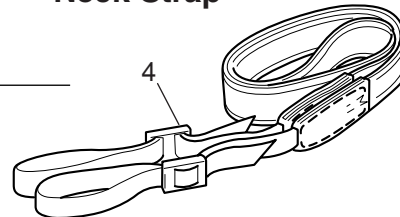
Silicone Grease



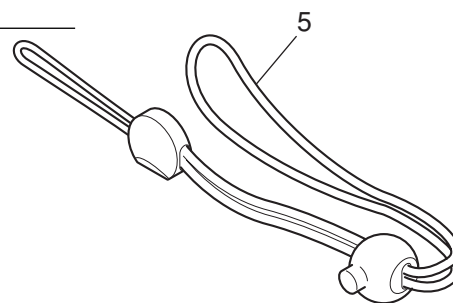
Anti-Condensation Solution



Neck Strap



Wrist Strap



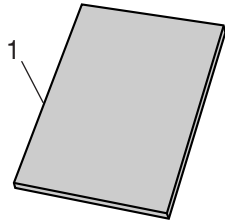
N.S: N.S Stand for No Stock (Product available)

PARTS LIST

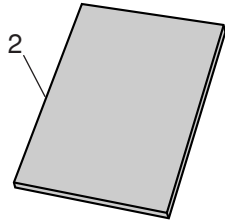
SYMBOL	PARTS NO.	CLASS	QTY	DESCRIPTION	REMARKS
1	CY1-6098-000	B	1	PACKING, RUBBER, WP-DC100/DC500	
2	DY9-3029-000	C	1	GREASE, PACKING	
3	DY9-3028-000	C	1	PROTECTOR, MOISTURE	
4	CY1-6099-000	B	1	NECK STRAP	
5	CY1-6174-000	B	1	WRIST STRAP	

Accessories-3

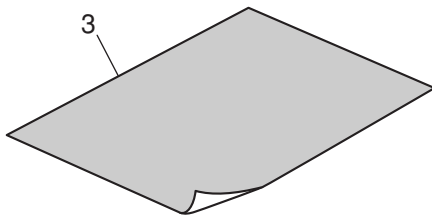
Camera User Guide



Software Starter Guide



System Map



PARTS LIST

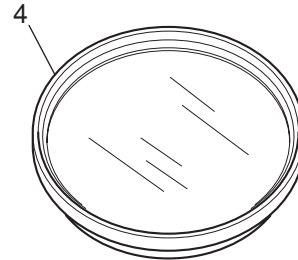
SYMBOL	PARTS NO.	CLASS	QTY	DESCRIPTION	REMARKS
1	CDI-J043-000	S	1	I.BOOK(J) IXY DIGITAL 300a	FOR JAPAN
	CDI-E049-000	S	1	I.BOOK(E) PS S330	FOR USA, CANADA, ASIA, AUSTRALIA
	CDI-F039-000	S	1	I.BOOK(F) PS S330	FOR CANADA
	CDI-S040-000	S	1	I.BOOK(S) PS S330	FOR USA
2	CDI-J034-000	S	1	SOFTWARE GUIDE(J) Ver.9.0	FOR JAPAN
	CDI-E042-000	S	1	SOFTWARE GUIDE(E) Ver.9.0	FOR USA, CANADA, ASIA, AUSTRALIA
	CDI-F032-000	S	1	SOFTWARE GUIDE(F) Ver.9.0	FOR CANADA
	CDI-S029-000	S	1	SOFTWARE GUIDE(S) Ver.9.0	FOR USA
3	CDI-J044-000	S	1	SYSTEM MAP(J) IXY DIGITAL 300a	FOR JAPAN
	CDI-E050-000	S	1	SYSTEM MAP(E) PS S330	FOR USA, CANADA, ASIA, AUSTRALIA
	CDI-F040-000	S	1	SYSTEM MAP(F) PS S330	FOR CANADA
	CDI-S041-000	S	1	SYSTEM MAP(S) PS S330	FOR USA

Service Tools

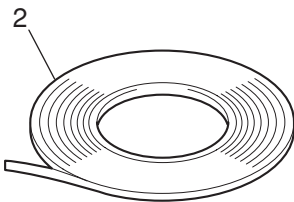
DIA BOND NO.1663G BLACK



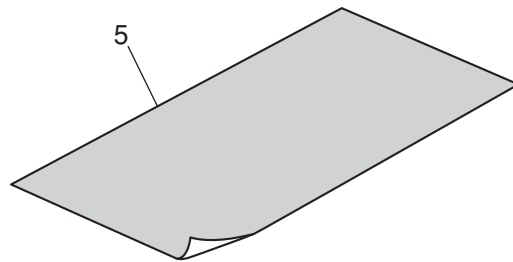
W-10 Filter



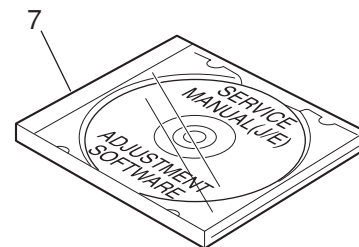
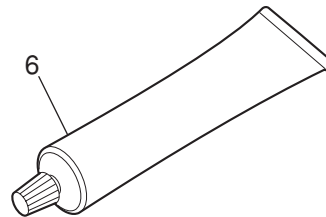
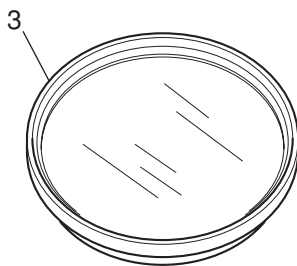
Adhesive Tape SONY T4000



18% Gray Chart



C-12 Filter



PARTS LIST

SYMBOL	PARTS NO.	CLASS	QTY	DESCRIPTION	REMARKS
1	CY9-8129-000	Y	1	BOND, DIA BOND NO.1663G BLACK	
2	CY4-6012-000	Y	1	ADHESIVE TAPE, SONY T4000	
3	DY9-2029-000	Y	1	FILTER, C-12	
4	CY9-1543-000	Y	1	FILTER, W-10	
5	CY4-6016-000	Y	1	CHART, 18% GRAY	
6	CY9-8064-000	Y	1	KE-347-B (SILICON SEALANT)	
7	CY8-4376-031	Y	1	CD-ROM, SERVICE MANUAL (J/E)	