

MODEL: PowerShot G2 (BLACK)

No.: PS-118
(AJ-0054E)Date: 29.03.02

SUBJECT: PARTS CATALOG

The titled model will be released in March 2002 by changing the color of external cover of the PowerShot G2 from silver to black.

As a new service part, a black external cover is established in addition to the service parts of the PowerShot G2.

The Parts Catalog is attached to this bulletin.

For repair service, refer to the Service Manual of the PowerShot G2(CY8-4373-031).

PowerShot G2 (BLACK)

PARTS CATALOG

CONTENTS

Main parts/units -----	Pg1
TOP UNIT -----	Pg2
FLASH/SPEAKER UNIT -----	Pg3
REAR PLATE UNIT -----	Pg4
BATTERY BOX UNIT -----	Pg5
LCD/HINGE UNIT -----	Pg6
Accessories-1 -----	Pg7

CLASS凡例

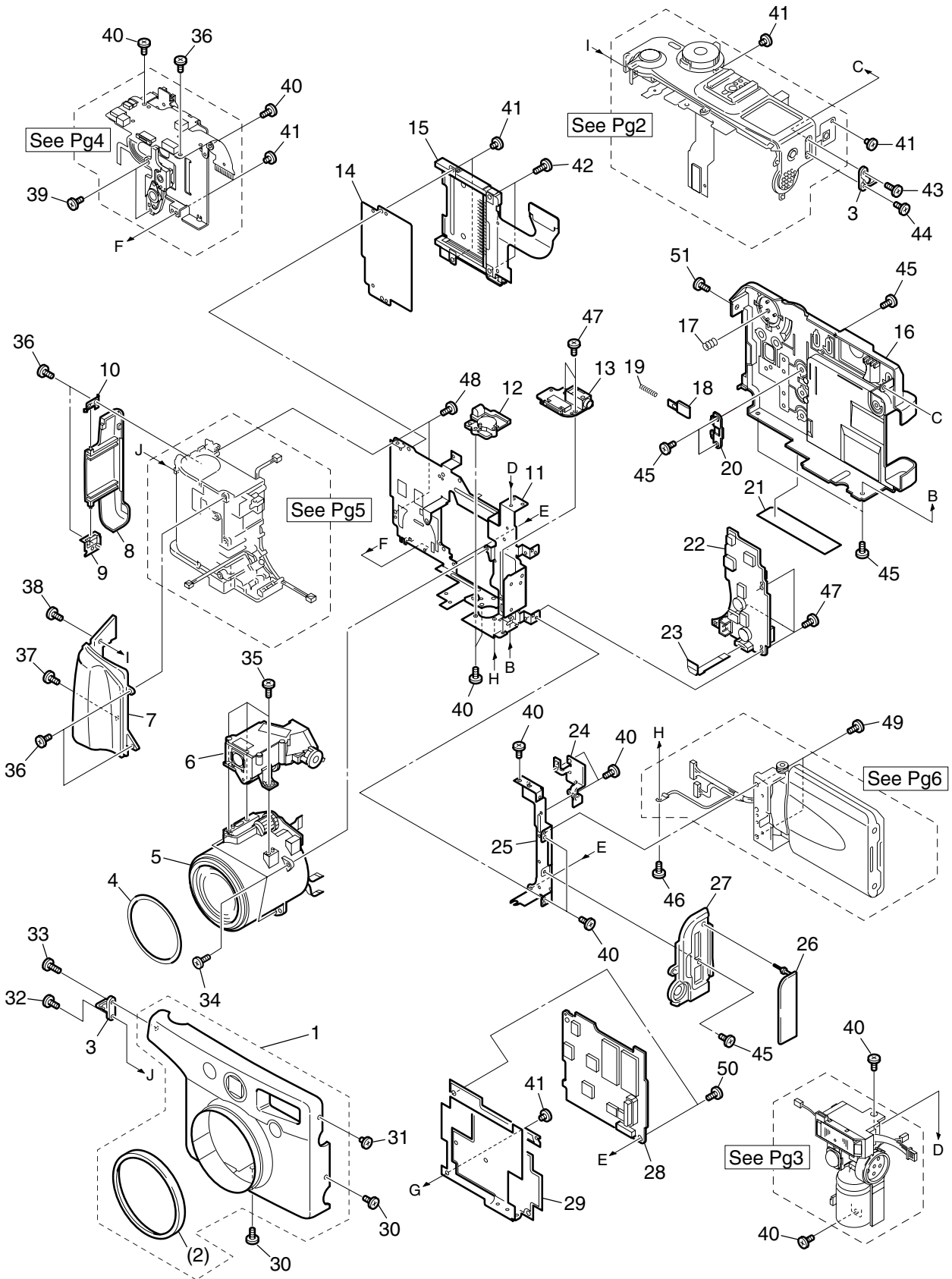
- A: 使用頻度 高
- B: 使用頻度 中
- C: 使用頻度 低
- D: 安全規格部品
- E: 消耗部品
- F: 標準ネジ、ワッシャー
- S: 供給制限品

Category of CLASS

- A: Frequency of use: High
- B: Frequency of use: Middle
- C: Frequency of use: Low
- D: Safety-related critical parts
- E: Consumable parts
- F: Standard screws and washers
- S: Supply of the parts is limited

Pg1

Main parts/units



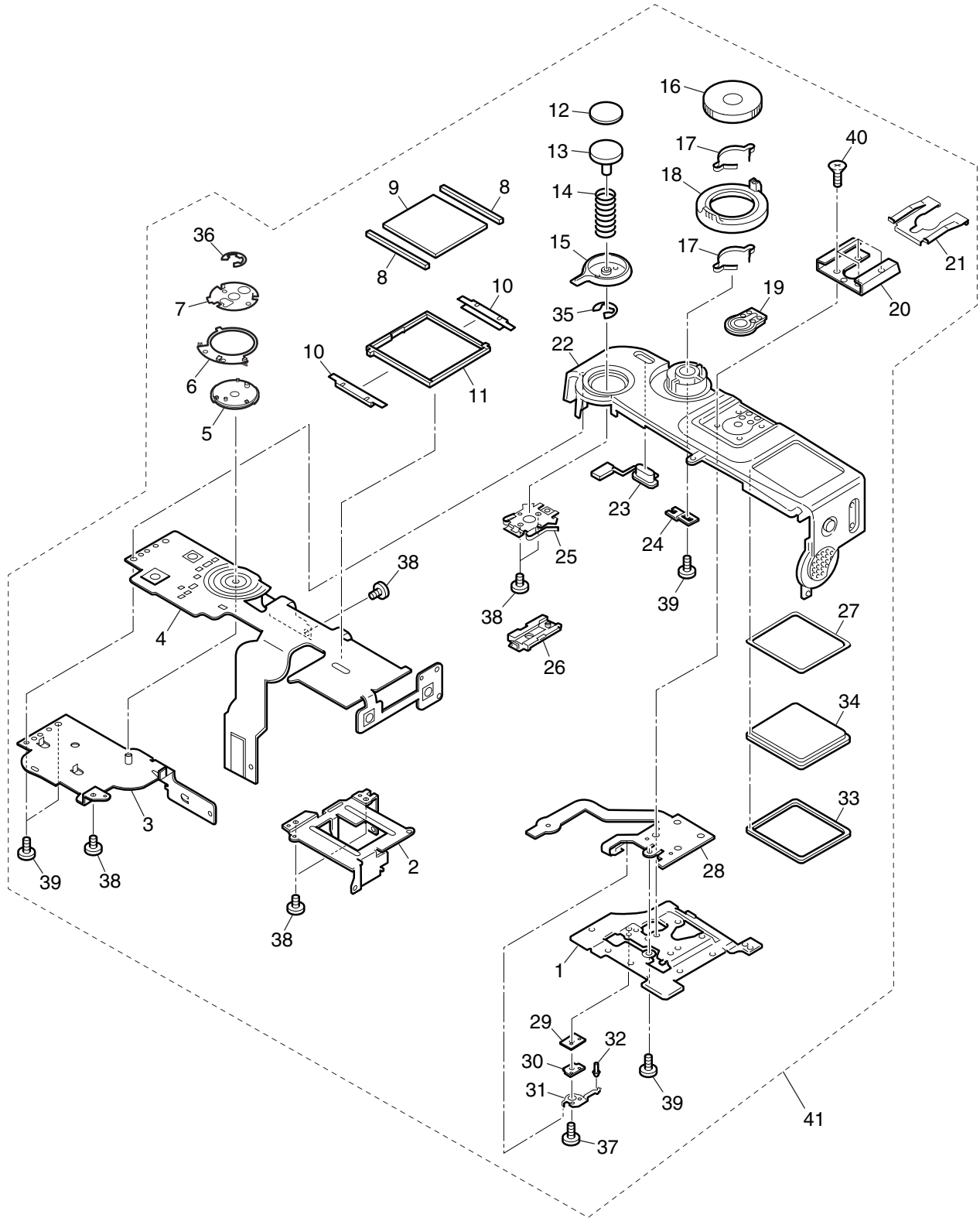
PowerShot G2 BLACK

PARTS LIST

Pg1

SYMBOL	PARTS NO.	CLASS	QTY	DESCRIPTION	REMARKS
1	CM1-1428-000	B	1	FRONT COVER UNIT	* Black type only
2	CD1-4345-000	B	1	RING, FRONT	* Black type only
3	CL1-1049-000	B	2	STRAP RING UNIT	
4	CD1-3268-010	B	1	PLATE, LENS	
5	CY1-6148-000	B	1	OPTICAL UNIT	* Black type only
6	CY1-6149-000	B	1	FINDER UNIT	* Black type only
7	CD1-4335-000	B	1	COVER, GRIP	* Black type only
8	CD1-4341-000	B	1	COVER, CF	* Black type only
9	CD1-3230-000	C	1	SPRING, CF CLICKING 2	
10	CD1-3229-000	C	1	SPRING, CF CLICKING 1	
11	CD1-3232-010	C	1	FRAME, MAIN	
12	CD1-3255-000	C	1	BASE, TRIPOD	
13	CM1-1075-000	C	1	PCB ASS'Y, JACK	
14	CD1-3231-000	C	1	PLATE, CF	
15	CM1-1077-000	C	1	CF UNIT	
16	CM1-1426-000	B	1	REAR COVER UNIT	* Black type only
17	CS8-5211-000	C	1	SPRING, SELECTOR	
18	CD1-3191-000	B	1	SLIDER, LCD LOCK	
19	CS8-5210-000	C	1	SPRING, LCD LOCK	
20	CD1-3192-000	C	1	STOPPER, LCD LOCK	
21	CY1-6151-000	B	1	PLATE, BODY NUMBER	FOR JAPAN * Black type only
	CY1-6152-000	B	1	PLATE, BODY NUMBER	FOR USA/CANADA * Black type only
	CY1-6153-000	B	1	PLATE, BODY NUMBER	FOR EUROPE/OTH * Black type only
22	CM1-1076-000	C	1	PCB ASS'Y, DC/DC CONVERTER	
23	CK1-0518-008	C	1	FPC, VID	
24	CD1-4010-000	C	1	FRAME, MINI	
25	CD1-3253-000	C	1	FRAME, SUB	
26	CD1-4344-000	B	1	COVER, JACK	* Black type only
27	CD1-4339-000	B	1	COVER, SIDE	* Black type only
28	CM1-1250-000	C	1	PCB ASS'Y, MAIN	
29	CD1-3197-000	C	1	SHEET, MAIN	
30	CD1-4354-000	F	2	SCREW	* Black type only
31	CD1-4355-000	F	1	SCREW	* Black type only
32	FC3-0140-000	F	1	SCREW	
33	CD1-4030-000	F	1	SCREW	
34	XA1-7170-407	F	3	SCREW	
35	XA4-9170-457	F	3	SCREW	
36	XA4-9170-359	F	5	SCREW	
37	CD1-4358-000	F	1	SCREW	* Black type only
38	CD1-4353-000	F	1	SCREW	* Black type only
39	XA4-9170-309	F	2	SCREW	
40	XA1-7170-307	F	11	SCREW	
41	XA1-7170-167	F	6	SCREW	
42	XA4-9170-609	F	2	SCREW	
43	CD1-4029-000	F	1	SCREW	
44	CD1-4025-000	F	1	SCREW	
45	CD1-4356-000	F	6	SCREW	* Black type only
46	CD1-4024-000	F	1	SCREW	
47	CB1-1998-000	F	5	SCREW	
48	XA4-9170-409	F	2	SCREW	
49	XA1-7170-457	F	2	SCREW	
50	FC2-8736-000	F	2	SCREW	
51	CD1-4357-000	F	1	SCREW	* Black type only

TOP UNIT



PowerShot G2 BLACK

PARTS LIST

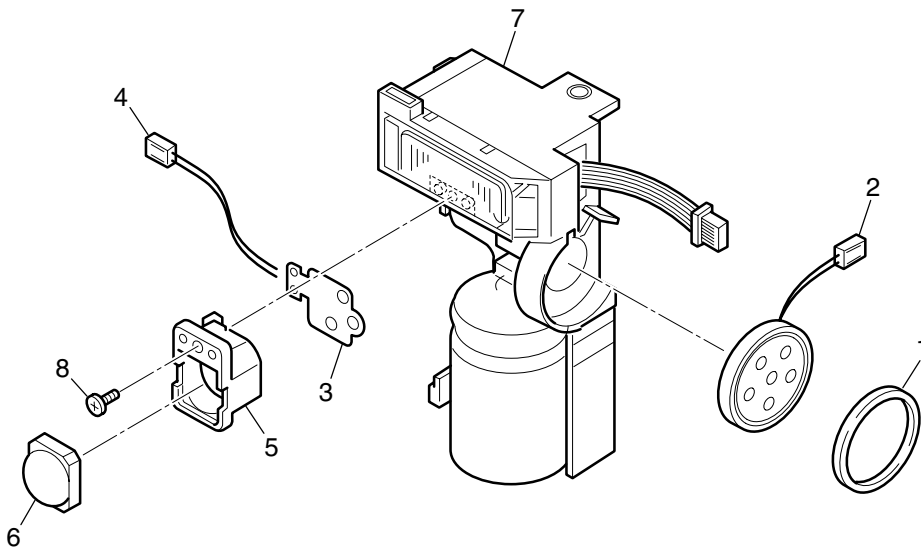
Pg2

SYMBOL	PARTS NO.	CLASS	QTY	DESCRIPTION	REMARKS
1	CD1-4018-000	B	1	FRAME, ACCESSORY SHOE	
2	CD1-4012-000	C	1	FRAME, B/W LCD	
3	CL1-1005-000	C	1	FRAME, MODE DIAL	
4	CM1-1080-000	C	1	TOP MODULE UNIT	
5	CL1-1009-000	C	1	BRUSH, MODE DIAL	
6	CL1-1008-000	C	1	BRUSH, MAIN	
7	CD1-3234-000	C	1	PLATE, MODE BASE	
8	CD1-3245-000	C	2	RUBBER, CONTACT	
9	CK9-0318-000	C	1	PANEL, B/W LCD	
10	CD1-3246-000	C	2	CLIP, B/W LCD	
11	CD1-3248-000	C	1	HOLDER, B/W LCD	
12	CD1-3251-000	B	1	CAP, RELEASE	
13	CD1-3250-000	C	1	BUTTON, RELEASE	
14	CS2-5656-000	C	1	SPRING, RELEASE	
15	CD1-4014-000	B	1	LEVER, ZOOM	
16	CD1-4348-000	B	1	DIAL, MODE	* Black type only
17	CD1-4006-000	B	2	SPRING, MODE CLICK	
18	CD1-4347-000	B	1	DIAL, MAIN	* Black type only
19	CB1-6258-000	B	1	ACCESSORY CONTACT UNIT	
20	CA1-6504-000	C	1	SHOE, ACCESSORY	* Black type only
21	CA1-9328-000	C	1	SPRING, ACCESSORY SHOE	* Black type only
22	CM1-1431-000	B	1	TOP COVER UNIT	* Black type only
23	CD1-4349-000	B	1	BUTTON, SELF TIMER	* Black type only
24	CB2-0574-000	C	1	PLATE, MODE CONNECTIVE	
25	CD1-3260-000	C	1	SPRING, ZOOM	
26	CL1-1006-000	C	1	BRUSH, ZOOM	
27	CD1-4027-000	C	1	SEAL, DUST COVER	
28	CK1-0519-000	C	1	FPC, ACCESSORY SHOE	
29	CD1-3223-000	C	1	BASE, ACCESSORY DETECT 1	
30	CD1-3226-000	C	1	BASE, ACCESSORY DETECT 2	
31	CD1-3225-000	C	1	PLATE, ACCESSORY DETECT	
32	CD1-3224-000	C	1	PIN, ACCESSORY SHOE	
33	CD1-4015-000	C	1	ADHESIVE TAPE, B/W WINDOW	
34	CD1-4011-000	B	1	WINDOW, B/W LCD	
35	XD2-1100-132	C	1	RING, E	
36	XD2-1100-172	C	1	RING, E	
37	XA1-7170-307	F	1	SCREW	
38	XA1-7170-167	F	6	SCREW	
39	XA4-9170-359	F	4	SCREW	
40	XA1-3170-407	F	4	SCREW	
41	CM1-1430-000	B	1	TOP UNIT	* Black type only

PowerShot G2 BLACK

Pg3

FLASH/SPEAKER UNIT



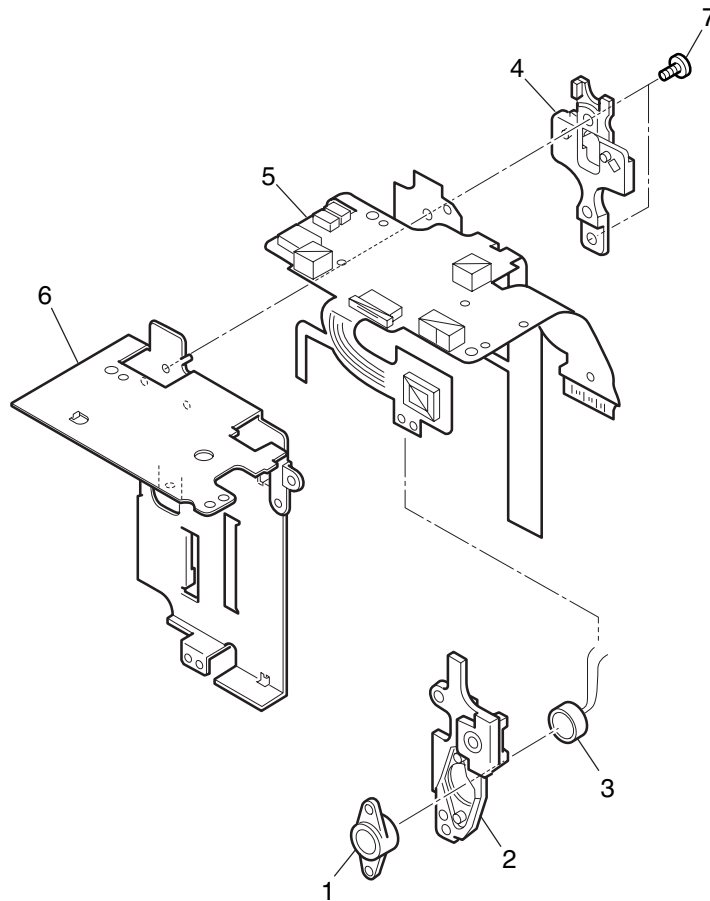
PowerShot G2 BLACK

PARTS LIST

Pg3

SYMBOL	PARTS NO.	CLASS	QTY	DESCRIPTION	REMARKS
1	CD1-3281-000	C	1	BUSH, SPEAKER	
2	CM1-1267-000	C	1	SPEAKER UNIT	
3	CM1-1059-000	C	1	FPC, AF LED	
4	CK2-1168-000	C	1	LEAD, AF LED	
5	CD1-3211-000	C	1	HOLDER, AF LED	
6	YN2-1146-000	C	1	LENS, AF LED	
7	CM1-1060-010	C	1	FLASH UNIT	
8	XA4-9170-359	F	1	SCREW	

REAR PLATE UNIT



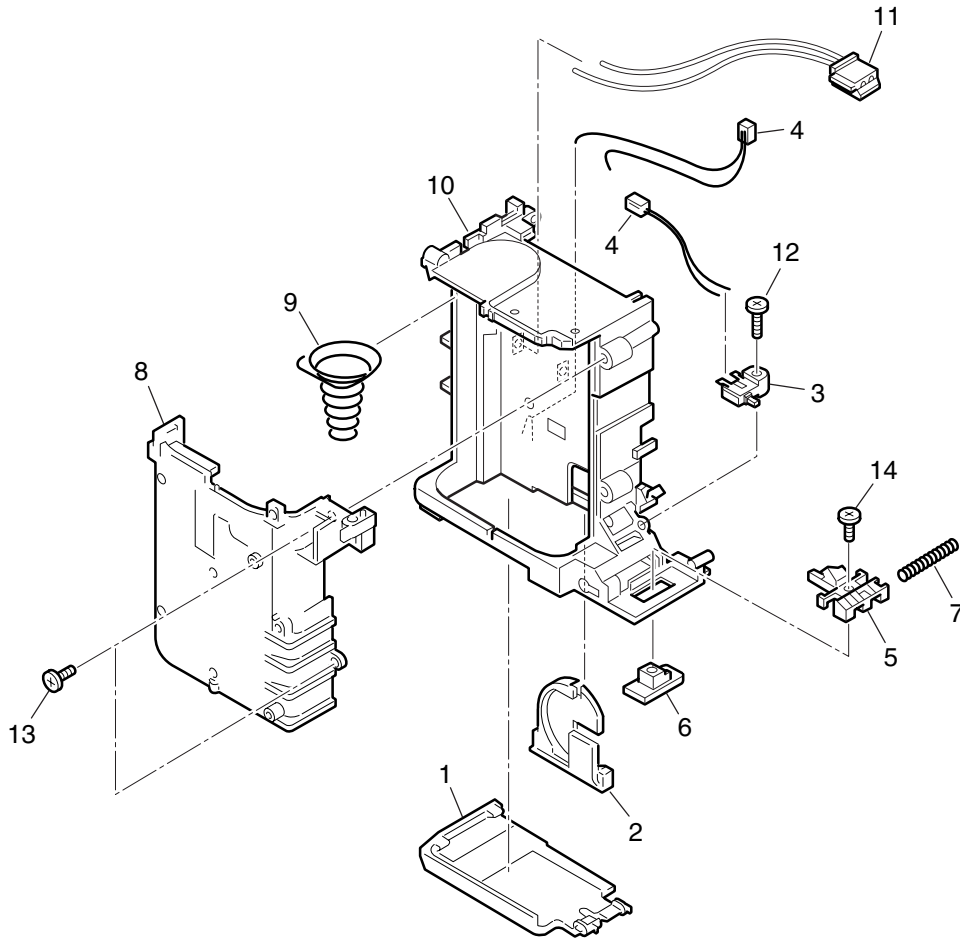
PowerShot G2 BLACK

PARTS LIST

Pg4

SYMBOL	PARTS NO.	CLASS	QTY	DESCRIPTION	REMARKS
1	CD1-3213-000	C	1	HOLDER, MICROPHONE	
2	CD1-3212-000	C	1	COVER, FLASH IC	
3	CM1-1056-000	C	1	MICROPHONE UNIT	
4	CD1-3187-000	C	1	BASE, SEL.BUTTON	
5	CM1-1083-000	C	1	PCB ASS'Y, BUTTON	
6	CD1-3186-000	C	1	FRAME, REAR	
7	XA1-7170-307	F	2	SCREW	

BATTERY BOX UNIT



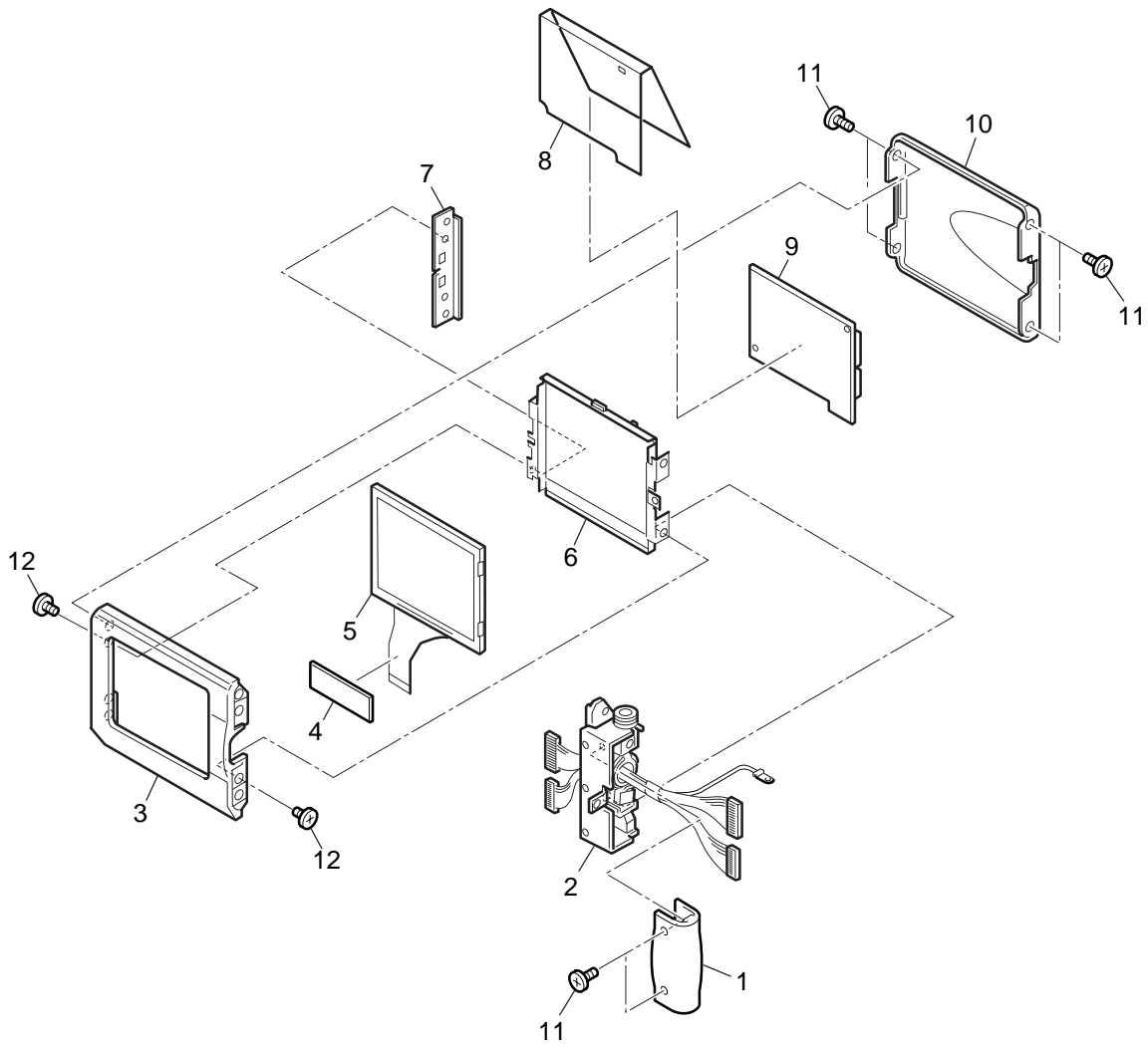
PowerShot G2 BLACK

PARTS LIST

Pg5

SYMBOL	PARTS NO.	CLASS	QTY	DESCRIPTION	REMARKS
1	CD1-4340-000	B	1	COVER, BATTERY	* Black type only
2	CD1-3264-000	B	1	HOLDER, DATE BATTERY	
3	WC2-0102-000	C	1	SWITCH, BATTERY LOCK	
4	CK2-1169-000	C	2	LEAD, SUB	
5	CD1-3227-000	C	1	LOCK, BATTERY COVER	
6	CD1-3228-000	B	1	OPENER, BATTERY COVER	* Black type only
7	FS4-2684-000	C	1	SPRING, BATTERY LOCK	
8	CD1-4338-000	C	1	COVER, BATTERY BOX	* Black type only
9	CS8-5214-000	C	1	SPRING, BATTERY EJECT	
10	CY1-6150-000	C	1	BATTERY BOX MAIN UNIT	* Black type only
11	CK2-1167-000	C	1	LEAD, POWER	
12	XA4-9170-359	F	1	SCREW	
13	XA4-9170-609	F	2	SCREW	
14	XA4-9200-657	F	1	SCREW	

LCD/HINGE UNIT



PowerShot G2 BLACK

PARTS LIST

Pg6

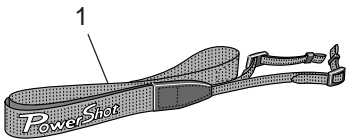
SYMBOL	PARTS NO.	CLASS	QTY	DESCRIPTION	REMARKS
1	CD1-4351-000	C	1	COVER, HINGE	* Black type only
2	CM1-1423-000	C	1	HINGE UNIT	* Black type only
3	CD1-4582-000	B	1	COVER, LCD FRAME	* Black type only
4	CD1-4078-000	C	1	SPACER, LCD FPC	
5	WG2-5219-001	C	1	PANEL, LCD (SELECTION)	
	WG2-5219-000	C	1	PANEL, LCD	
6	CM1-1252-000	C	1	BACK LIGHT UNIT	
7	CD1-3995-000	C	1	PLATE, NUT	
8	CD1-3996-000	C	1	SHEET, LCD	
9	CM1-1251-000	C	1	PCB ASS'Y, LCD	
10	CD1-4336-000	B	1	COVER, LCD TOP	* Black type only
11	CD1-4356-000	F	4	SCREW	* Black type only
12	XA1-7170-207	F	2	SCREW	

PowerShot G2 BLACK

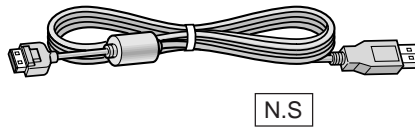
Pg7

Accessories-1

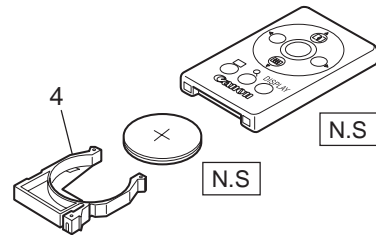
Neck Strap
NS-DC300BL



USB Interface Cable
IFC-200PCU



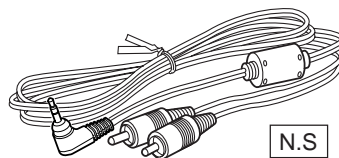
Wireless Controller



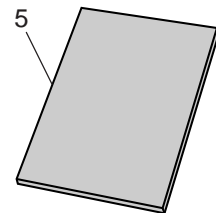
Lens Cap



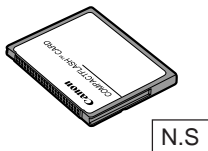
AV Cable AVC-DC100



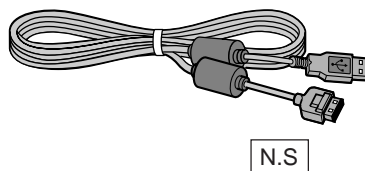
Camera User Guide



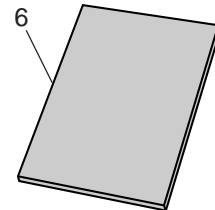
CF Card FC-32M



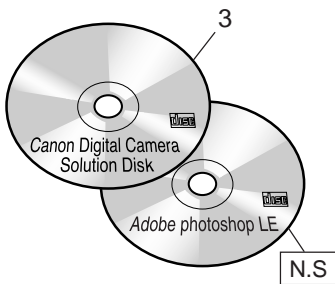
Direct Interface Cable
DIF-200



Software Starter Guide



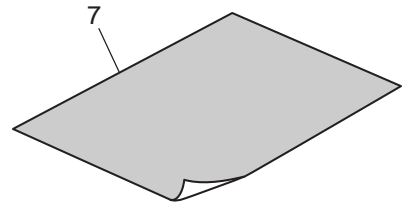
Canon Digital Camera
Solution Disk,
Adobe photoshop LE



Soft Case SC-PS700



System Map



N.S : N.S Stand for No Stock (Product available)

PowerShot G2 BLACK

PARTS LIST

Pg7

SYMBOL	PARTS NO.	CLASS	QTY	DESCRIPTION	REMARKS
1	C84-1124-000	B	1	STRAP, NECK	* Black type only
2	C84-1123-000	B	1	LENS CAP UNIT	* Black type only
3	C84-1109-000	S	1	CD-ROM, SOLUTION VER.8 (J/E)	FOR JAPAN, ASIA, AUSTRALIA
	C84-1110-000	S	1	CD-ROM, SOLUTION VER.8 (E/F/S)	FOR USA, CANADA
4	CY1-6074-000	B	1	HOLDER, BATTERY	
5	CDI-E022-000	S	1	I.BOOK (E) PS G2	FOR USA, CANADA, ASIA, AUSTRALIA
	CDI-F020-010	S	1	I.BOOK (F) PS G2	FOR CANADA
	CDI-J021-000	S	1	I.BOOK (J) PS G2	FOR JAPAN
	CDI-S018-010	S	1	I.BOOK (S) PS G2	FOR USA
6	CDI-E041-000	S	1	SOFTWARE GUIDE (E) FOR VER.8	FOR USA, CANADA, ASIA, AUSTRALIA
	CDI-F031-000	S	1	SOFTWARE GUIDE (F) FOR VER.8	FOR CANADA
	CDI-J032-000	S	1	SOFTWARE GUIDE (J) FOR VER.8	FOR JAPAN
	CDI-S028-000	S	1	SOFTWARE GUIDE (S) FOR VER.8	FOR USA
7	CDI-E023-010	S	1	SYSTEM MAP (E) PS G2	FOR USA, CANADA, ASIA, AUSTRALIA
	CDI-F021-010	S	1	SYSTEM MAP (F) PS G2	FOR CANADA
	CDI-J022-010	S	1	SYSTEM MAP (J) PS G2	FOR JAPAN
	CDI-S019-010	S	1	SYSTEM MAP (S) PS G2	FOR USA