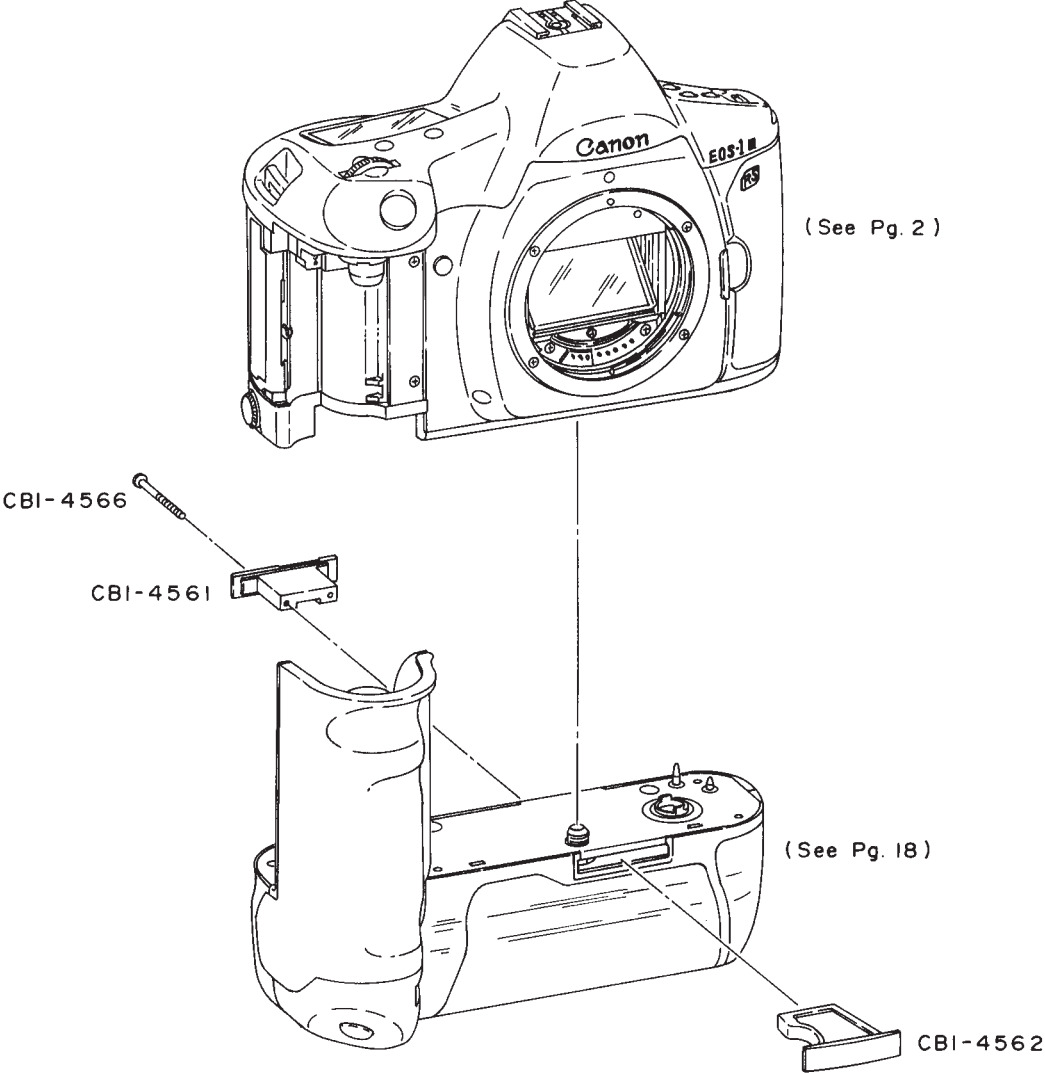


**Canon**

**EOS 1 N RS REF.NO.C12-8311**

**PARTS  
CATALOG**

# CANON EOS-1N RS

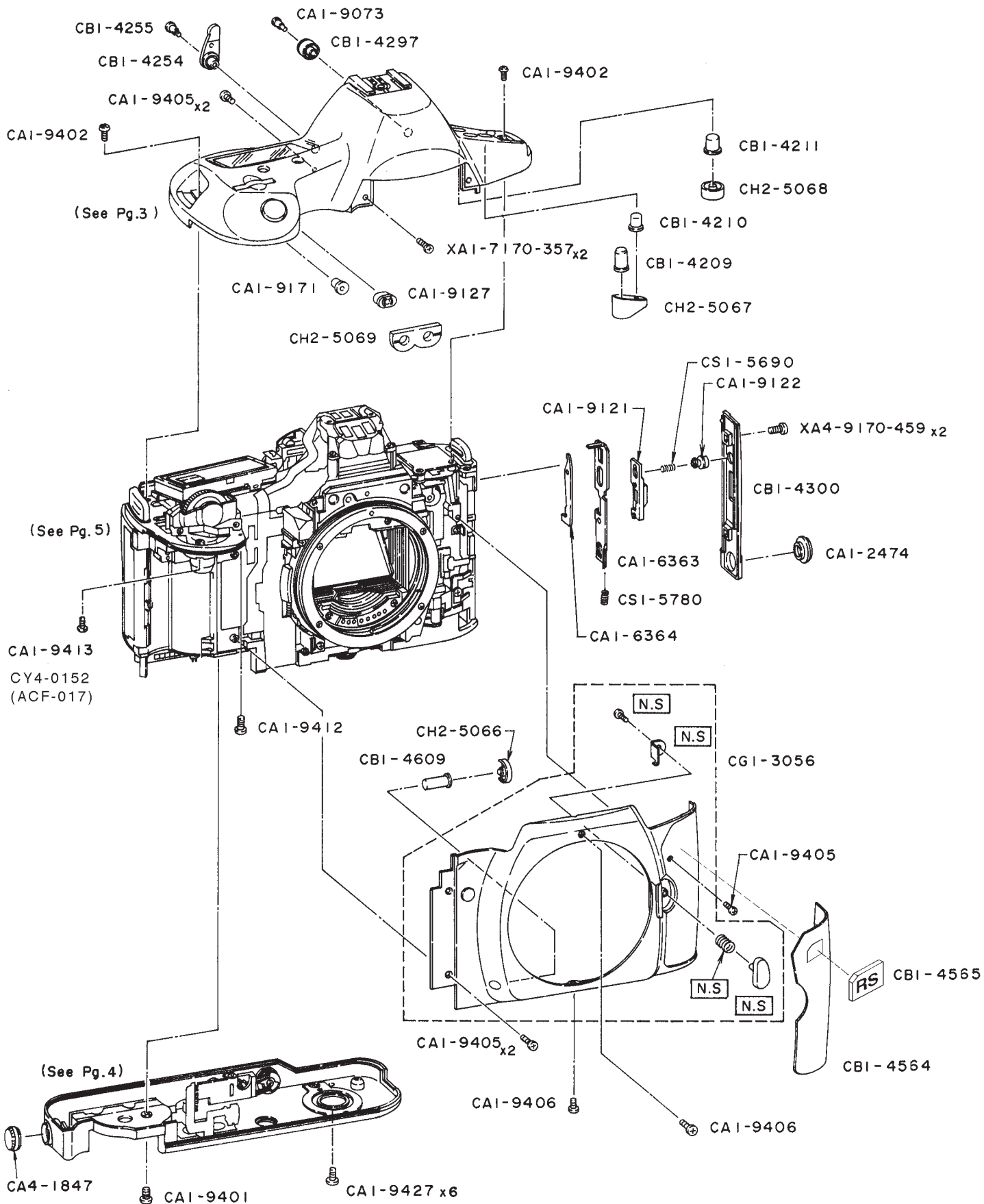


**PARTS LIST**

REF.No.C12-8311

NEW	PARTS NO.	CLASS	QTY	DESCRIPTION
	CB1-4561-000	D	1	COVER,REAR BLIND
	CB1-4562-000	D	1	COVER,FRONT BLIND
	CB1-4566-000	-	1	SCREW, CROSS RECESS PH

# CANON EOS-1N RS

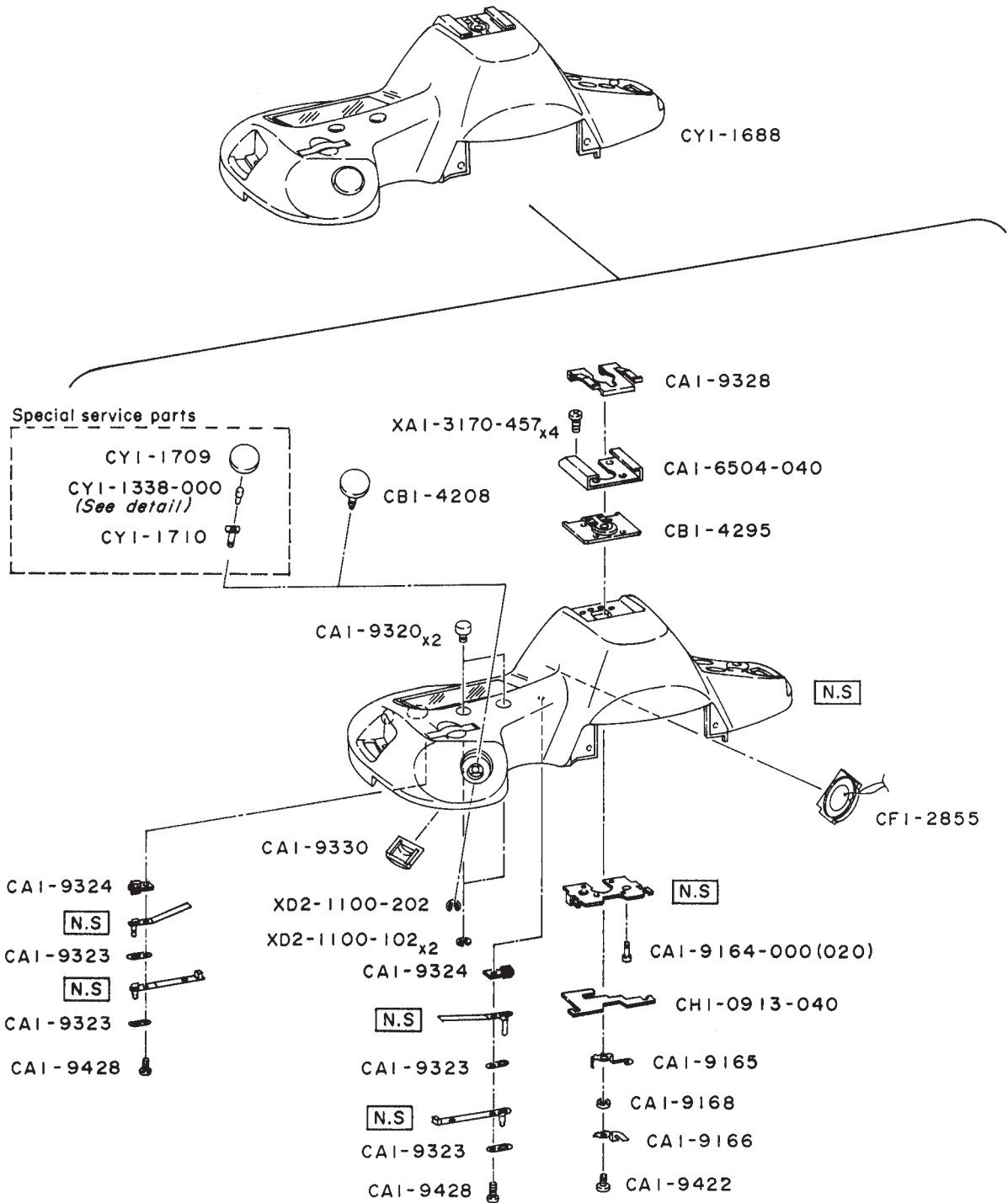


# PARTS LIST

REF.No.C12-8311

NEW	PARTS NO.	CLASS	QTY	DESCRIPTION
	CA1-2474-000	A	1	CAP,P.C TERMINAL
	CA1-6363-000	E	1	HOOK
	CA1-6364-000	E	1	LEVER,LOCK
	CA1-9073-000	D	1	SHAFT,EYEPIECE ADJUSTING
	CA1-9121-000	D	1	LEVER,LATCH
	CA1-9122-000	E	1	BUTTON,LATCH
	CA1-9127-000	E	1	BUTTON,AE LOCK
	CA1-9171-000	E	1	BUTTON,AV
	CA1-9401-000	-	1	SCREW, CROSS RECESS PH
	CA1-9402-000	-	2	SCREW, CROSS RECESS PH
	CA1-9405-000	-	5	SCREW, CROSS RECESS PH
	CA1-9406-000	-	2	SCREW, CROSS RECESS PH
	CA1-9412-000	-	1	SCREW, CROSS RECESS PH
	CA1-9413-000	-	1	SCREW, CROSS RECESS PH
	CA1-9427-000	-	6	SCREW, CROSS RECESS PH
	CA4-1847-000	D	1	CAP, TERMINAL
	CB1-4209-000	C	1	BUTTON,MODE1
	CB1-4210-000	C	1	BUTTON,MODE2
	CB1-4211-000	C	1	BUTTON,MODE3
	CB1-4254-000	D	1	LEVER,EYEPIECE SHUTTER
	CB1-4255-000	-	1	SCREW, CROSS RECESS PH
	CB1-4297-000	C	1	DIAL,EYEPIECE ADJUSTING
	CB1-4300-000	D	1	COVER,LATCH
	CB1-4564-000	C	1	COVER,FRONT PANEL
	CB1-4565-000	D	1	PLATE,NAME
	CB1-4609-000	D	1	BUTTON,STOP DOWN
	CG1-3056-000	C	1	FRONT COVER UNIT
	CH2-5066-000	D	1	SWITCH,STOP-DOWN
	CH2-5067-000	D	1	SWITCH,MODE
	CH2-5068-000	D	1	SWITCH,METERING MODE
	CH2-5069-000	D	1	SWITCH,AE LOCK
	CS1-5690-000	D	1	SPRING,COIL
	CS1-5780-000	D	1	SPRING,COIL
	CY4-0152-000	F	1	SCREW, CROSS RECESS PH[M2]
	XA1-7170-357	-	2	SCREW, CROSS RECESS PH
	XA4-9170-459	-	2	SCREW, CROSS RECESS PH

CANON EOS-1N RS



CYI-1338-000 detail      ⊗STANDARD

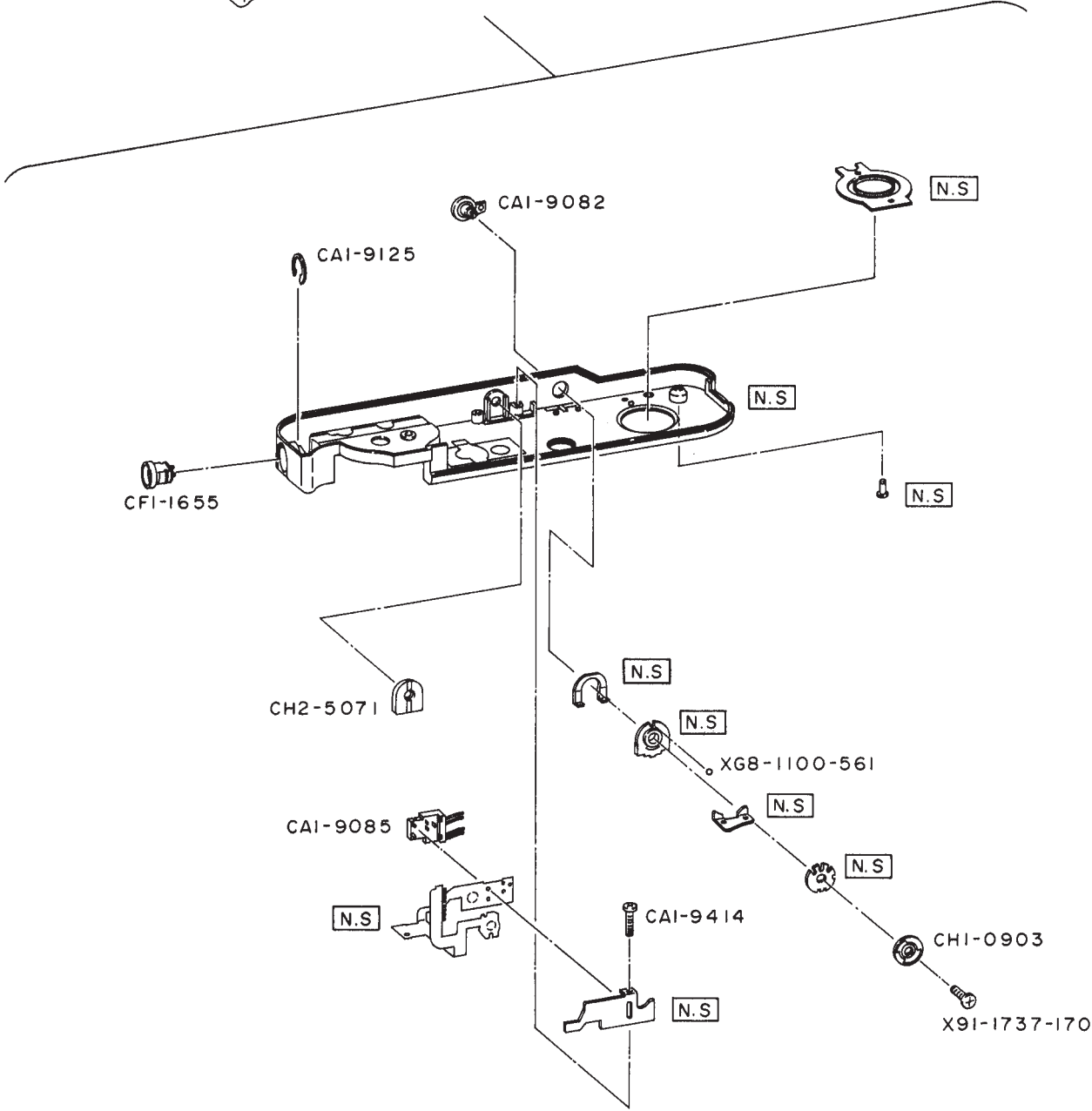
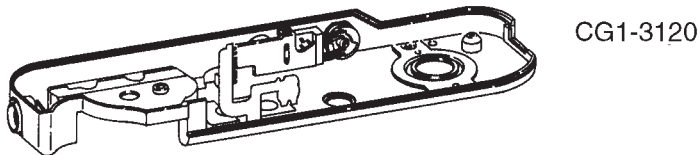
A	B	SIZE	A	B	SIZE	A	B	SIZE	A	B	SIZE
1.0mm	2.8mm	(001)	1.5mm	2.8mm	(004)	2.0mm	2.8mm	(007)	2.5mm	2.8mm	(010)
	3.0mm	(002)		3.0mm	(005)⊗		3.0mm	(008)		3.0mm	(011)
	3.2mm	(003)		3.2mm	(006)		3.2mm	(009)		3.2mm	(012)

# PARTS LIST

REF.No.C12-8311

NEW	PARTS NO.	CLASS	QTY	DESCRIPTION
	CA1-6504-040	D	1	SHOE,ACCESSORY
	CA1-9164-000(020)	E	1	PIN,FLASH
	CA1-9165-000	D	1	CONTACT,SHOCK PREVENTION
	CA1-9166-000	D	1	CONTACT,X
	CA1-9168-000	D	1	SPACER,INSULATING
	CA1-9320-000	C	2	BUTTON,LAMP
	CA1-9323-000	E	4	SPACER,L
	CA1-9324-000	E	2	BASE,CONTACT
	CA1-9328-000	C	1	SPRING,PLATE
	CA1-9330-000	E	1	CAP,LIGHT SHIELD
	CA1-9422-000	-	1	SCREW, CROSS RECESS PH
	CA1-9428-000	-	2	SCREW, CROSS RECESS PH
	CB1-4208-000	C	1	BUTTON,RELEASE
	CB1-4295-000	E	1	BASE,PLATE
	CF1-2855-000	E	1	BEEPER
	CH1-0913-040	E	1	TOP FLEX
	CY1-1338-000(XXX)	D	1	SHAFT,ADJUSTING
	CY1-1688-000	C	1	TOP COVER UNIT
	CY1-1709-000	C	1	BUTTON,RELEASE
	CY1-1710-000	D	1	SHAFT,RELEASE BUTTON
	XA1-3170-457	-	4	SCREW, CROSS RECESS ,FCH
	XD2-1100-102	-	2	E RING
	XD2-1100-202	-	1	WASHER,RETAINING

CANON EOS-1N RS



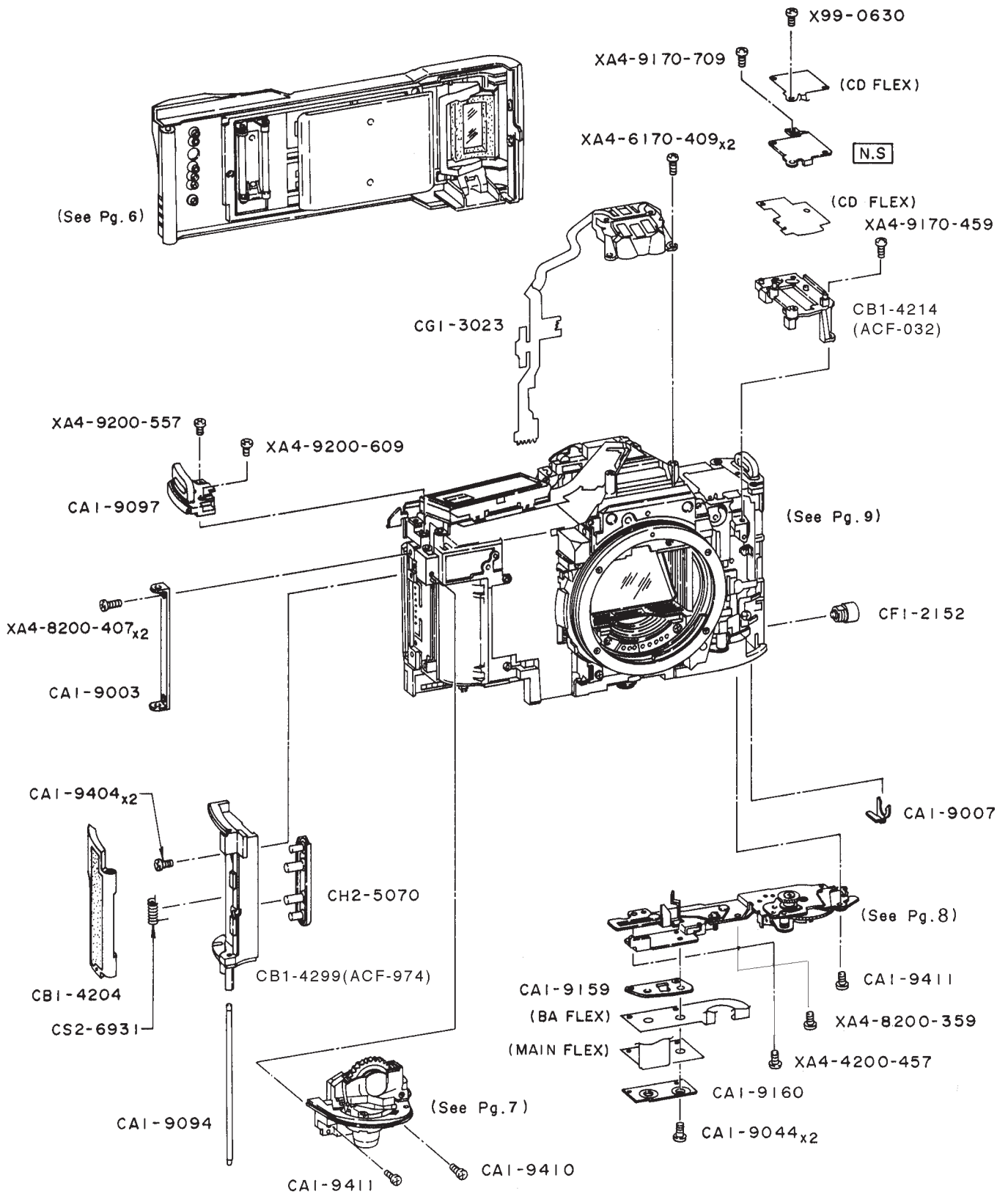


**PARTS LIST**

REF.No.C12-8311

NEW	PARTS NO.	CLASS	QTY	DESCRIPTION
	CA1-9082-000	C	1	LEVER,MAIN SWITCH
	CA1-9085-000	D	1	CONTACT,MAIN SWITCH
	CA1-9125-000	C	1	RING,C
	CA1-9414-000	-	1	SCREW, CROSS RECESS PH
	CF1-1655-000	C	1	JACK,REMOTE CONTROL
	CG1-3120-000	C	1	BASEPLATE UNIT
	CH1-0903-000	D	1	BOARD,MAIN SWITCH
	CH2-5071-000	E	1	SWITCH , REWIND
	X91-1737-170	-	1	SCREW, CROSS RECESS PH
	XG8-1100-561	-	1	BALL,STEEL

# CANON EOS-1N RS

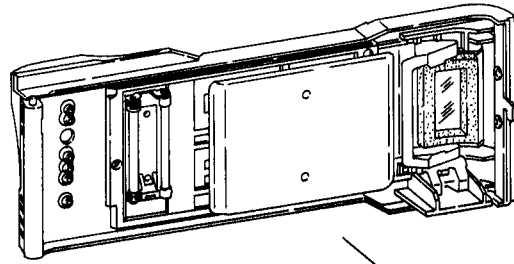


# PARTS LIST

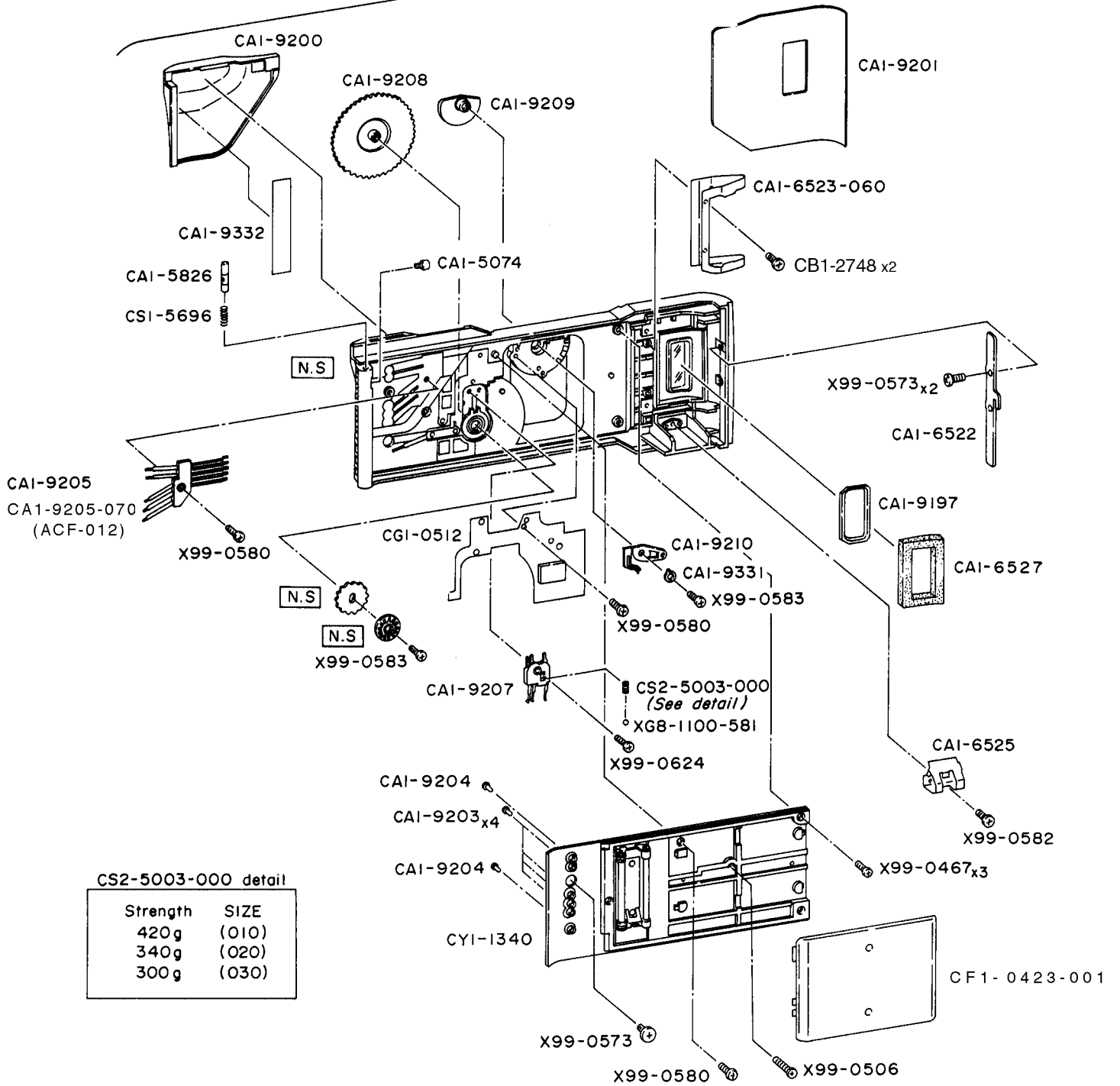
REF.No.C12-8311

NEW	PARTS NO.	CLASS	QTY	DESCRIPTION
	CA1-9003-000	E	1	HINGE,BACK COVER
	CA1-9007-000	D	1	RING,PC RETAINER
	CA1-9044-000	-	2	SCREW, CROSS RECESS PH
	CA1-9094-000	D	1	SHAFT,PALM WING
	CA1-9097-000	C	1	LUG,NECK STRAP(RIGHT)
	CA1-9159-000	D	1	PAD,FLEX CONNECTION
	CA1-9160-000	E	1	BASE,FLEX CONNECTION
	CA1-9404-000	-	2	SCREW, CROSS RECESS PH
	CA1-9410-000	-	1	SCREW, CROSS RECESS PH
	CA1-9411-000	-	2	SCREW, CROSS RECESS PH
	CB1-4204-000	D	1	WING,PALM
	CB1-4214-000	E	1	BASE,MODE SWITCH-A
	CB1-4299-000	E	1	BASE,SWITCH
	CF1-2152-000	D	1	TERMINAL,PC
	CG1-3023-000	D	1	SUPERIMPOSE ASS'Y
	CH2-5070-000	E	1	SWITCH,CF
	CS2-6931-000	D	1	SPRING,COIL
	X99-0630-000	-	1	SCREW, CROSS RECESS PH
	XA4-4200-457	-	1	SCREW, CROSS RECESS PH
	XA4-6170-409	-	2	SCREW, CROSS RECESS PH
	XA4-8200-407	-	2	SCREW, CROSS RECESS PH
	XA4-8200-359	-	1	SCREW, CROSS RECESS PH
	XA4-9170-459	-	1	SCREW, CROSS RECESS PH
	XA4-9170-709	-	2	SCREW, CROSS RECESS PH
	XA4-9200-557	-	1	SCREW, CROSS RECESS PH
	XA4-9200-609	-	1	SCREW, CROSS RECESS PH

# CANON EOS-1N RS



CGI-3061  
CG1-3061-070(ACF-012)



CS2-5003-000 detail

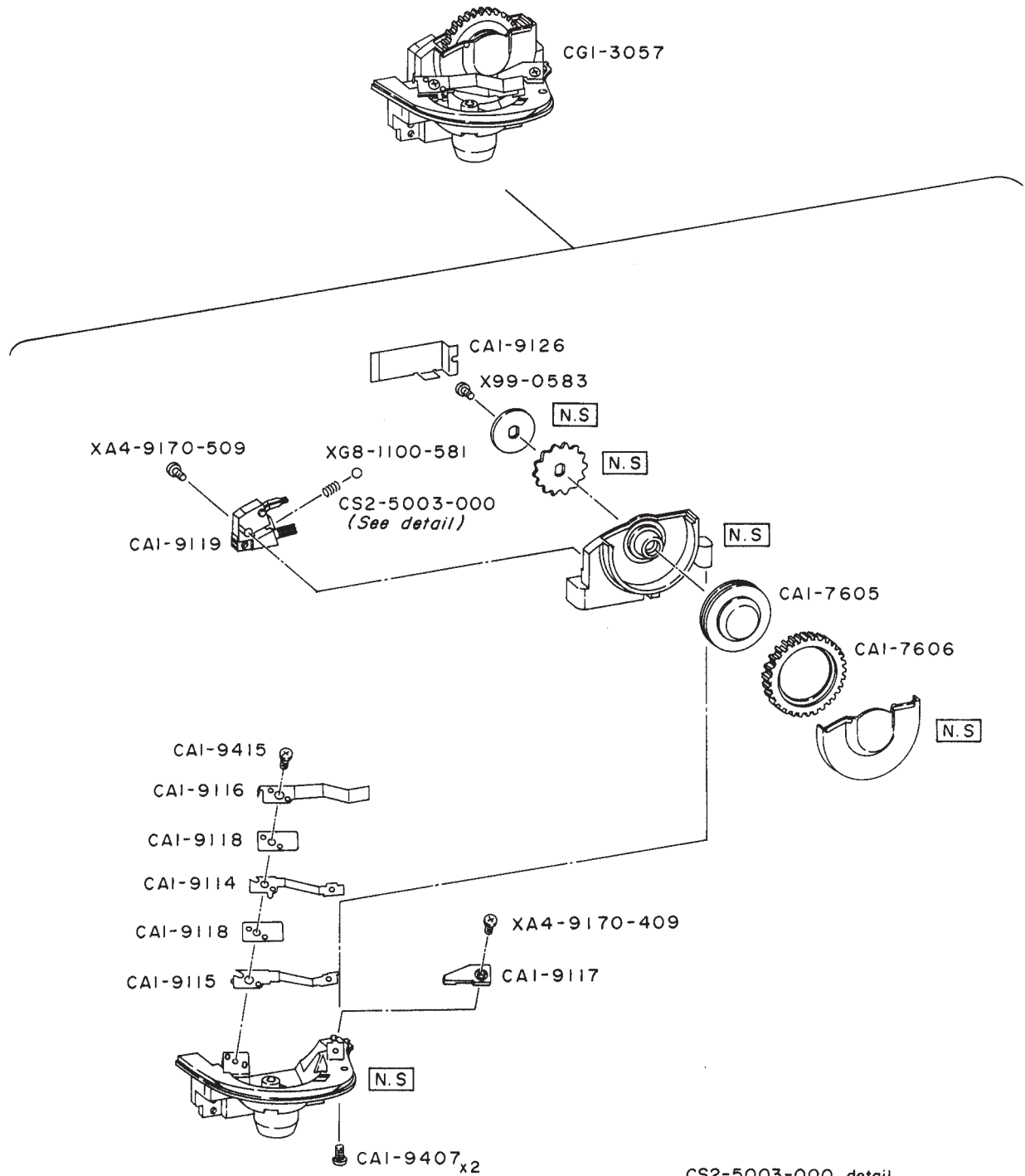
Strength	SIZE
420g	(010)
340g	(020)
300g	(030)

# PARTS LIST

REF.No.C12-8311

NEW	PARTS NO.	CLASS	QTY	DESCRIPTION
	CA1-5074-000	E	1	SCREW,STOPPER
	CA1-5826-000	D	1	SHAFT,HINGE
	CA1-6522-000	E	1	CLAW,BACK COVER
	CA1-6523-060	E	1	HOLDER,FILM MAGAZINE
	CA1-6525-000	E	1	PLATE,SPRING
	CA1-6527-000	D	1	SHIELD,LIGHT
	CA1-9197-000	D	1	FILM WINDOW
	CA1-9200-000	C	1	GRIP,BACK COVER
	CA1-9201-000	C	1	COVERING,BACK COVER
	CA1-9203-000	D	4	PIN
	CA1-9204-000	D	2	PIN
	CA1-9205-000	D	1	CONTACT,SIGNAL
	CA1-9205-070	D	1	CONTACT,SIGNAL
	CA1-9207-000	E	1	CONTACT,DIAL
	CA1-9208-000	D	1	DIAL,REAR INPUT
	CA1-9209-000	D	1	CAM,REAR INPUT DIAL
	CA1-9210-000	E	1	CONTACT,DIAL LOCK SWITCH
	CA1-9331-000	E	1	WASHER
	CA1-9332-000	D	1	TAPE,DOUBLE SIDED
	CF1-0423-001	D	1	PLATE,PRESSURE
	CG1-0512-000	D	1	NDB FLEX ASSY
	CG1-3061-000	D	1	BACK COVER UNIT
	CG1-3061-070	D	1	BACK COVER UNIT
	CS1-5696-000	D	1	SPRING,COIL
	CS2-5003-000(XXX)	D	1	SPRING,COIL
	CY1-1340-000	E	1	COVER,BACK(DIAL)
	X99-0467-000	-	3	SCREW, CROSS RECESS PH
	X99-0506-000	-	1	SCREW, CROSS RECESS PH
	X99-0573-000	-	3	SCREW, CROSS RECESS PH
	X99-0580-000	-	3	SCREW, CROSS RECESS PH
	X99-0582-000	-	3	SCREW, CROSS RECESS PH
	X99-0583-000	-	2	SCREW, CROSS RECESS PH
	X99-0624-000	-	1	SCREW, CROSS RECESS PH
	XG8-1100-581	-	1	BALL,STTEL

CANON EOS-1N RS



CS2-5003-000 detail

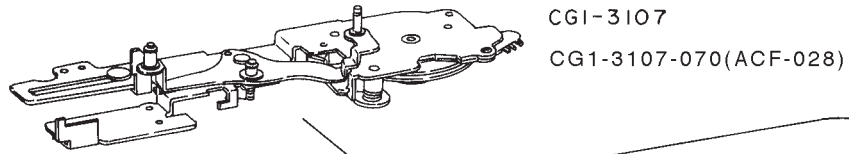
Strength	SIZE
420g	(010)
340g	(020)
300g	(030)

# PARTS LIST

REF.No.C12-8311

NEW	PARTS NO.	CLASS	QTY	DESCRIPTION
	CA1-7605-000	E	1	DIAL,MODE CHANGE
	CA1-7606-000	D	1	RING,DIAL
	CA1-9114-000	D	1	CONTACT,RELEASE SWITCH
	CA1-9115-000	D	1	CONTACT,RELEASE SWITCH
	CA1-9116-000	D	1	CONTACT,RELEASE GROUND
	CA1-9117-000	E	1	PLATE,RELEASE STOPPER
	CA1-9118-000	D	2	SPACER,CONTACT
	CA1-9119-000	E	1	CONTACT,DIAL
	CA1-9126-000	D	1	COVER,DIAL CONTACT
	CA1-9407-000	-	2	SCREW, CROSS RECESS PH
	CA1-9415-000	-	1	SCREW, CROSS RECESS PH
	CG1-3057-000	D	1	DIAL UNIT
	CS2-5003-000(XXX)	D	1	SPRING,COIL
	X99-0583-000	-	1	SCREW, CROSS RECESS PH
	XA4-9170-409	-	1	SCREW, CROSS RECESS PH
	XA4-9170-509	-	1	SCREW, CROSS RECESS PH
	XG8-1100-581	-	1	BALL,STTEL

# CANON EOS-1N RS



XD2-1100-102 (ACF-975)

N.S

XD2-1100-102

N.S

CB1-7782-000(038) (ACF-028)

N.S

CB1-4228-000(030)  
CB1-4228-000(033) (ACF-965)  
CB1-4228-000(036) (ACF-943)

N.S

N.S

CS2-6927-000 (008)

N.S

CHI-I363

N.S x2

CFI-3090

N.S

XD2-1100-132

XD2-1100-132

N.S

N.S

CB1-4228-000(\*\*\*) detail

	A	SIZE
	φ 3.0mm	(030)
	φ 3.3mm	(033)
	φ 3.6mm	(036)※

※ STANDARD

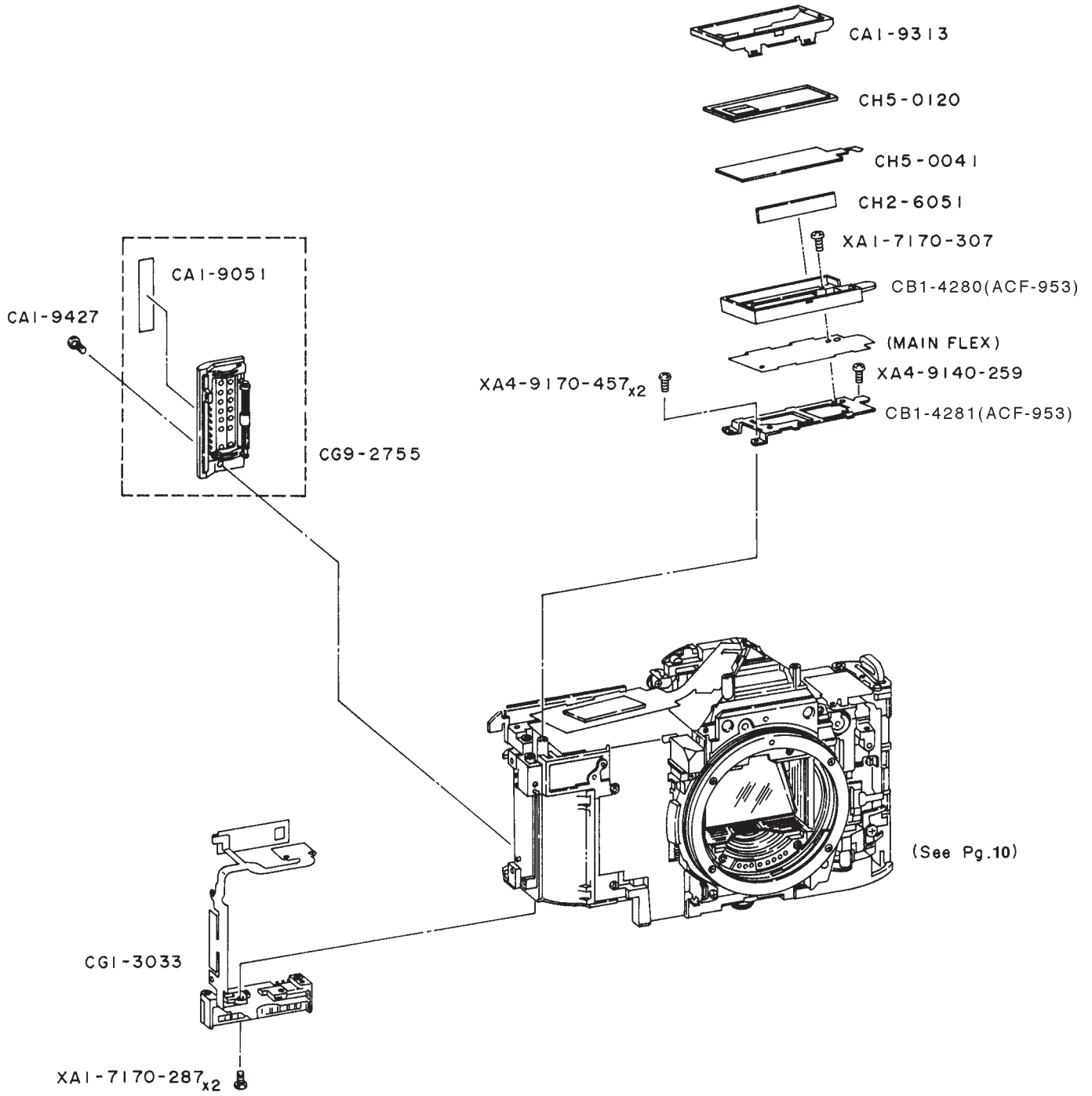


**PARTS LIST**

REF.No.C12-8311

NEW	PARTS NO.	CLASS	QTY	DESCRIPTION
	CB1-4228-000(030)	E	1	STOPPER, RUBBER
	CB1-4228-000(033)	E	1	STOPPER, RUBBER
	CB1-4228-000(036)	D	1	STOPPER, RUBBER
	CB1-7782-000(038)	E	1	STOPPER, CHARGE RUBBER
	CF1-3090-000	E	1	CAM GEAR UNIT
	CG1-3107-000	E	1	CHARGE UNIT
	CG1-3107-070	E	1	CHARGE UNIT
	CH1-1363-000	D	1	PCB,COUNTER PULSE
	CS2-6927-000(008)	E	1	SPRING
	XD2-1100-102	-	2	E RING
	XD2-1100-132	-	2	E RING

# CANON EOS-1N RS



# PARTS LIST

REF.No.C12-8311

NEW	PARTS NO.	CLASS	QTY	DESCRIPTION
	CA1-9051-000	E	1	LABEL,FILM LOADING
	CA1-9313-000	E	1	FRAME,LCD
	CA1-9427-000	-	1	SCREW, CROSS RECESS PH
	CB1-4280-000	E	1	CASE, LCD
	CB1-4281-000	E	1	BASE, LCD
	CG1-3033-000	D	1	SYSTEM CONNETOR ASS'Y
	CG9-2755-000	D	1	ROLLER HOLDER UNIT
	CH2-6051-000	E	1	CONNECTOR,ELASTIC
	CH5-0041-000	E	1	ELECTRO LUMINESCENCE EL
	CH5-0120-000	D	1	LCD,EXTERNAL
	XA1-7170-287	-	2	SCREW, CROSS RECESS PH
	XA1-7170-307	-	1	SCREW, CROSS RECESS PH
	XA4-9140-259	-	1	SCREW, CROSS RECESS PH
	XA4-9170-457	-	2	SCREW, CROSS RECESS PH

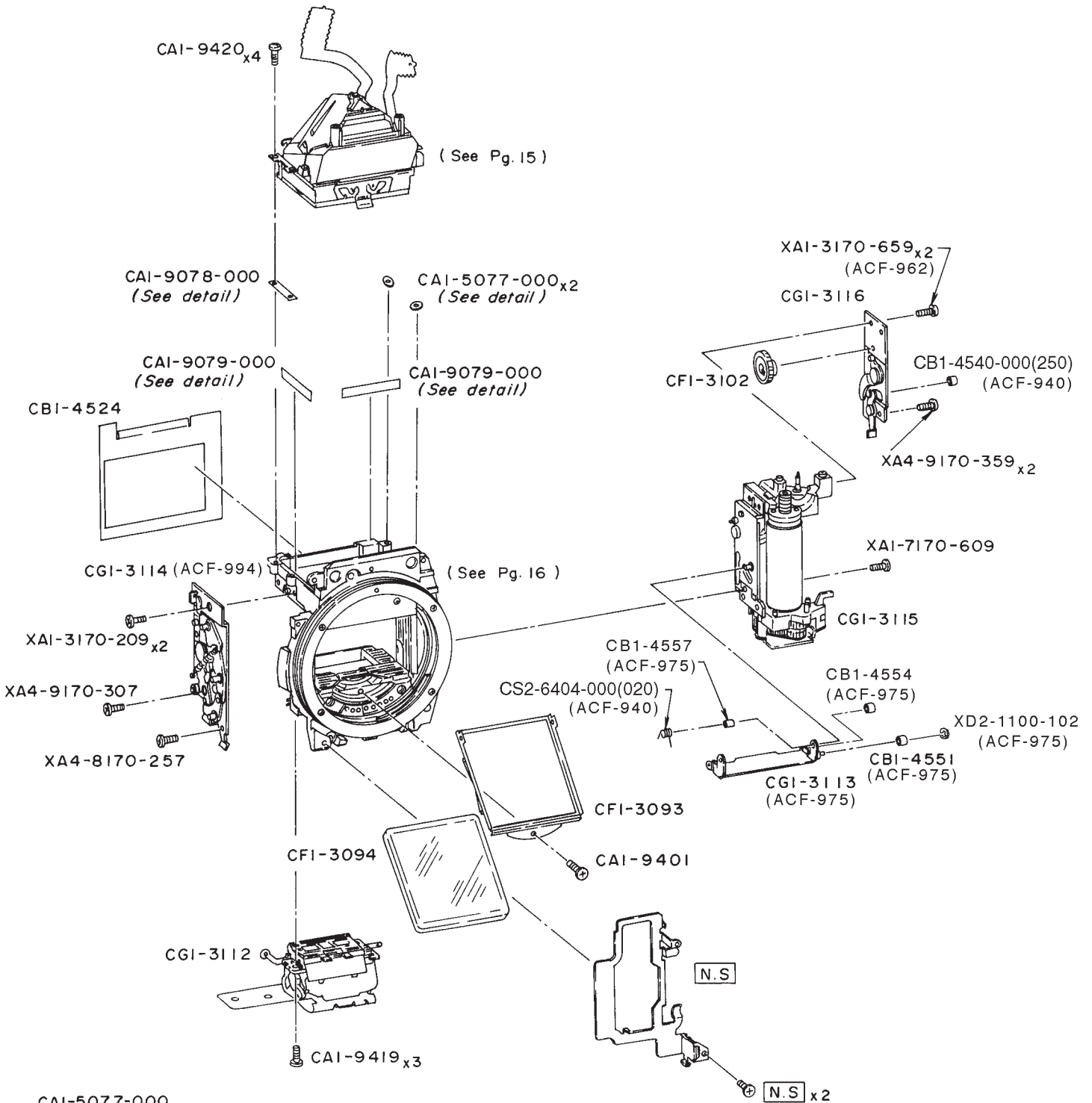


# PARTS LIST

REF.No.C12-8311

NEW	PARTS NO.	CLASS	QTY	DESCRIPTION
	CA1-7531-000	-	2	SCREW, CROSS RECESS PH
	CA1-7752-000	E	2	WASHER,WAVE
	CB1-2689-000	-	1	SCREW, CROSS RECESS PH
	CG1-3028-000	D	1	DX CONTACT ASS'Y
	CG1-3044-000	D	1	REWIND WORM GEAR UNIT
	CG1-3045-000	D	1	FORK UNIT
	CG1-3117-000	D	1	REWIND PLANETARY GEAR UNIT
	CG1-3118-140	D	1	FPC ASS'Y,MAIN
	CG1-3119-000	D	1	MOTOR1 FLEX ASS'Y
	CS3-0086-000	D	1	GEAR,REWIND SUN
	X91-2036-080	-	2	SCREW, CROSS RECESS PH
	X99-0481-000	-	2	SCREW, CROSS RECESS PH
	X99-0689-000	-	2	SCREW, CROSS RECESS PH
	XA4-8170-409	-	2	SCREW, CROSS RECESS PH
	XA4-9170-409	-	3	SCREW, CROSS RECESS PH
	XA4-9200-607	-	1	SCREW, CROSS RECESS PH
	XA4-9200-709	-	1	SCREW, CROSS RECESS PH

# CANON EOS-1<sup>N</sup>RS



CAI-5077-000  
CAI-9078-000 detail

A	SIZE
0.03 mm (003)	
0.05 mm (005)	
0.10 mm (010)	
0.20 mm (020)	
0.30 mm (030)	
0.40 mm (040)	
0.60 mm (060)	

CAI-9079-000 detail

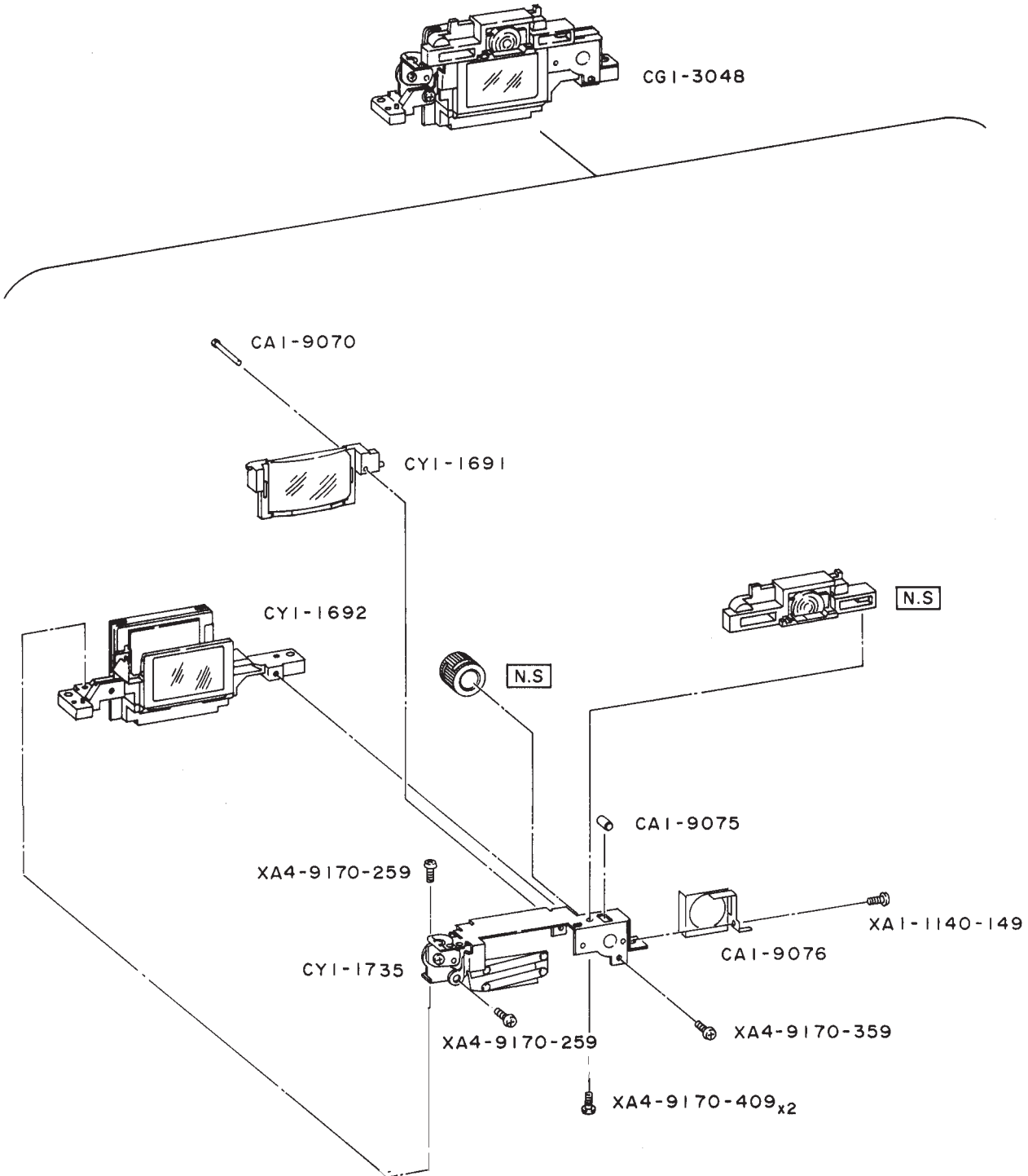
A	SIZE
0.05 mm (005)	
0.10 mm (010)	
0.20 mm (020)	
0.30 mm (030)	
0.40 mm (040)	
0.60 mm (060)	

# PARTS LIST

REF.No.C12-8311

NEW	PARTS NO.	CLASS	QTY	DESCRIPTION
	CA1-5077-000(XXX)	E	1	WASHER,FINDER FOCUSING
	CA1-9078-000(XXX)	E	1	SHIM,FINDER FOCUSING
	CA1-9079-000(XXX)	E	2	PLATE,PARALLAX ADJUSTING
	CA1-9401-000	-	1	SCREW, CROSS RECESS PH
	CA1-9419-000	-	3	SCREW, CROSS RECESS PH
	CA1-9420-000	-	4	SCREW, CROSS RECESS PH
	CB1-4524-000	E	1	CURTAIN,LIGHT SHIELD
	CB1-4540-000(250)	D	1	COLLAR, SUB-MIRROR MECH.
	CB1-4551-000	D	1	COLLAR, SUB-MIRROR
	CB1-4554-000	D	1	COLLAR, SUB-MIRROR DRIVE
	CB1-4557-000	D	1	COLLAR, SUB-MIRROR
	CF1-3093-000	D	1	PELLICLE MIRROR FRAME UNIT
	CF1-3094-000	D	1	PELLICLE MIRROR UNIT
	CF1-3102-000	D	1	MIRROR CAM GEAR UNIT
	CG1-3112-000	D	1	AF UNIT
	CG1-3113-000	D	1	SUB-MIRROR UNIT
	CG1-3114-000	D	1	SHUTTER DRIVE UNIT
	CG1-3115-000	D	1	MOTOR 2 UNIT
	CG1-3116-000	D	1	SUB-MIRROR MECHANISM UNIT
	CS2-6404-000(020)	D	1	SPRING, SUB-MIRROR DRIVE
	XA1-3170-209	-	2	SCREW, CROSS RECESS PH
	XA1-3170-659	-	2	SCREW, CROSS RECESS FCH
	XA1-7170-609	-	1	SCREW, CROSS RECESS PH
	XA4-8170-257	-	1	SCREW, CROSS RECESS PH
	XA4-9170-307	-	1	SCREW, CROSS RECESS PH
	XA4-9170-359	-	2	SCREW, CROSS RECESS PH
	XD2-1100-102	-	5	E RING

# CANON EOS-1N RS



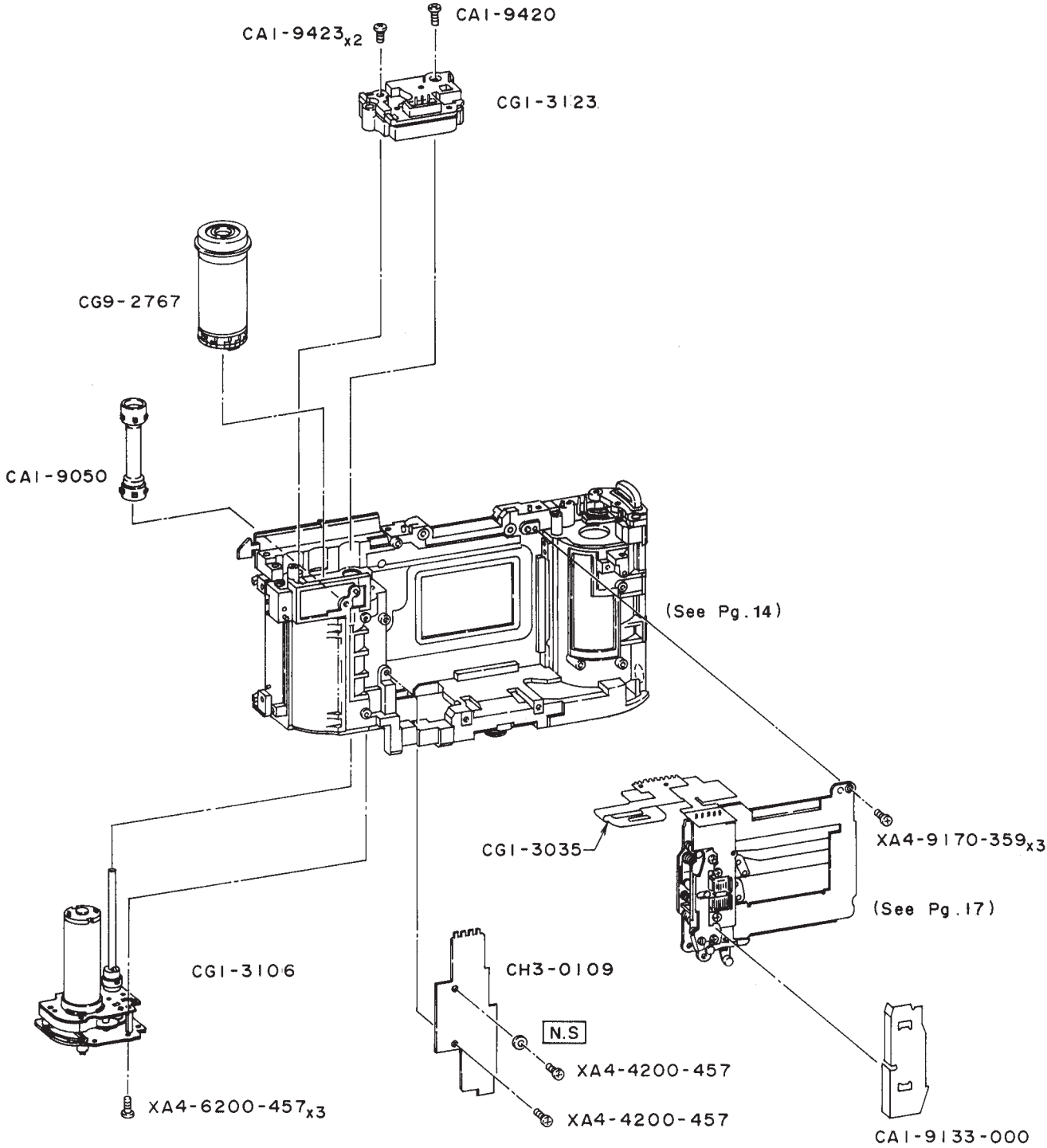


**PARTS LIST**

REF.No.C12-8311

NEW	PARTS NO.	CLASS	QTY	DESCRIPTION
	CA1-9070-000	D	1	SHAFT,FRAME GUIDE
	CA1-9075-000	E	1	PIN,EYEPIECE DETENT
	CA1-9076-000	E	1	SPRING,EYEPIECE DETENT
	CG1-3048-000	D	1	EYEPIECE ADJUSTMENT UNIT
	CY1-1691-000	D	1	EYEPIECE LENS ADJUSTING UNIT
	CY1-1735-000	D	1	EYEPIECE SHUTTER UNIT
	CY1-1692-000	C	1	EYEPIECE UNIT
	XA1-1140-149	-	1	SCREW, CROSS RECESS PH
	XA4-9170-259	-	2	SCREW, CROSS RECESS PH
	XA4-9170-359	-	1	SCREW, CROSS RECESS PH
	XA4-9170-409	-	2	SCREW, CROSS RECESS PH

CANON EOS-1N RS

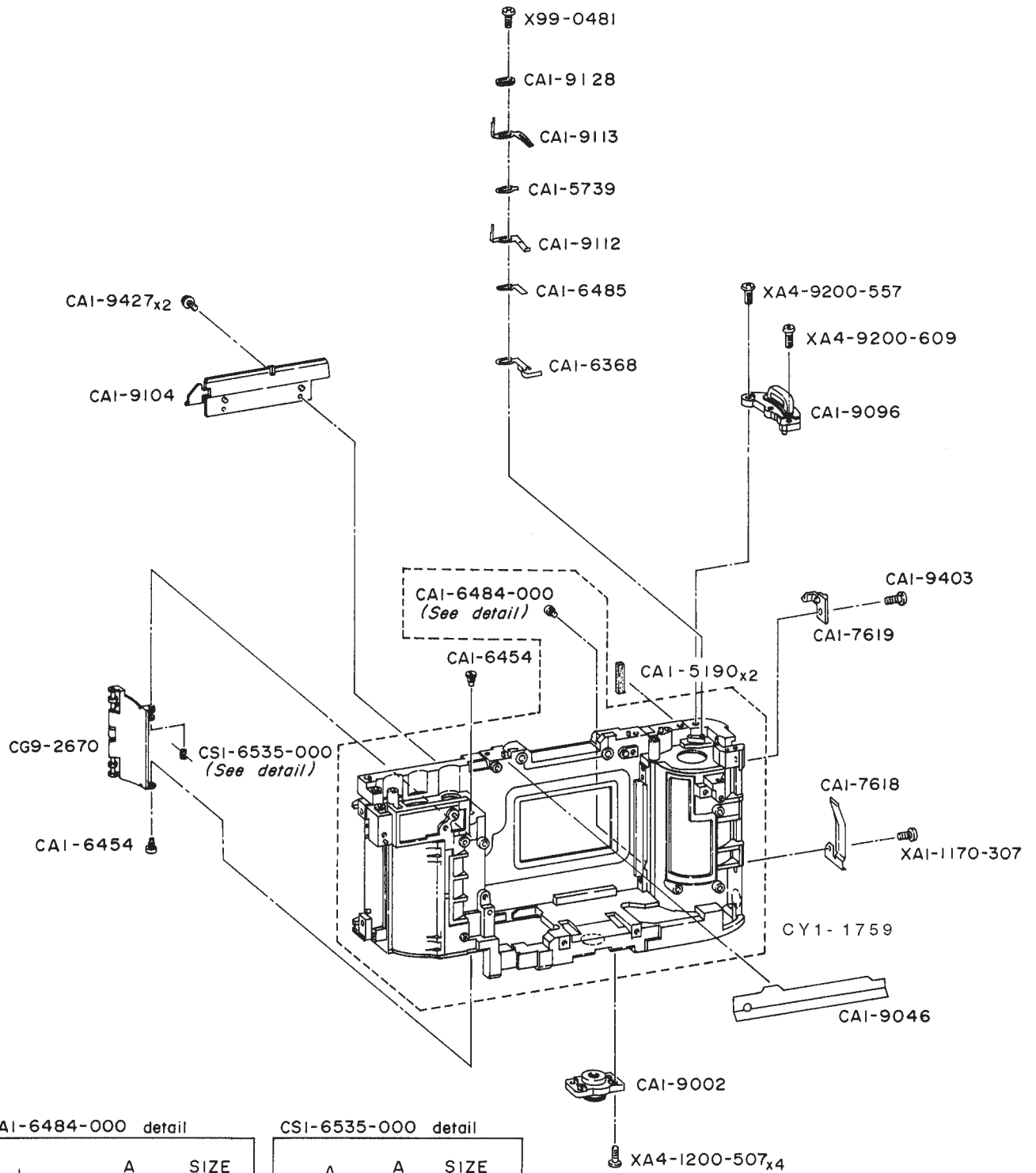


# PARTS LIST

REF.No.C12-8311

NEW	PARTS NO.	CLASS	QTY	DESCRIPTION
	CA1-9050-000	C	1	SPROKET
	CA1-9133-000	E	1	SHEET,DUST
	CA1-9420-000	-	1	SCREW, CROSS RECESS PH
	CA1-9423-000	-	2	SCREW, CROSS RECESS PH
	CG1-3106-000	E	1	FILM ADVANCE UNIT
	CG1-3123-000	D	1	SIGNAL UNIT
	CG1-3035-000	E	1	INTERCONNECTING FLEX
	CG9-2767-000	D	1	SPOOL UNIT
	CH3-0109-000	D	1	DC/DC CONVERTER1 ASS'Y
	XA4-4200-457	-	2	SCREW, CROSS RECESS PH
	XA4-6200-457	-	3	SCREW, CROSS RECESS PH
	XA4-9170-359	-	3	SCREW, CROSS RECESS PH

CANON EOS-1N RS



CAI-6484-000 detail

A	SIZE
$\phi 2.4$ mm	(024)
$\phi 2.5$ mm	(025)
$\phi 2.6$ mm	(026)

CSI-6535-000 detail

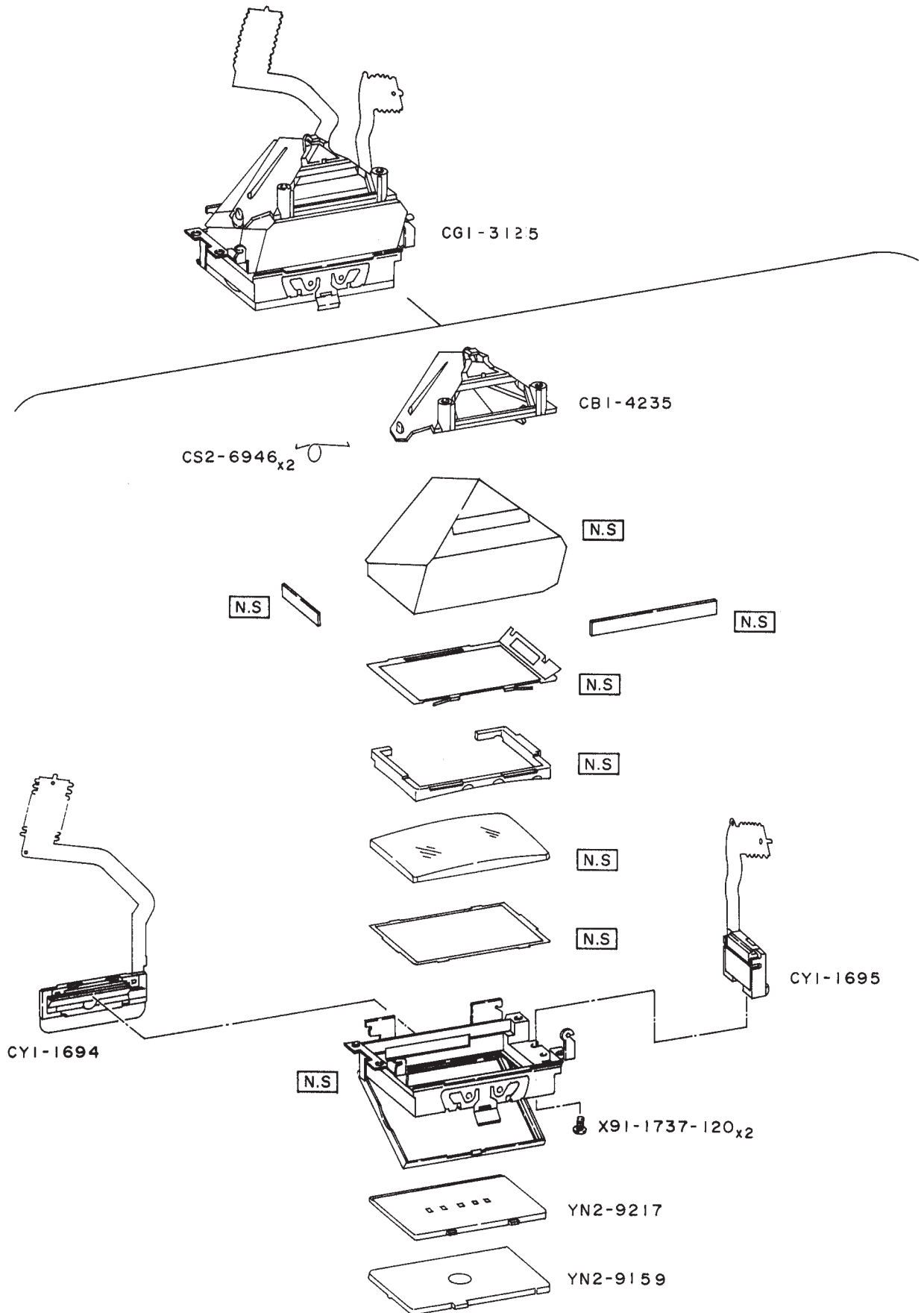
A	SIZE
110°	(110)
115°	(115)
120°	(120)

# PARTS LIST

REF.No.C12-8311

NEW	PARTS NO.	CLASS	QTY	DESCRIPTION
	CA1-5190-000	E	2	SHIELD,LIGHT
	CA1-5739-000	D	1	INSULATOR
	CA1-6368-000	E	1	PLATE,SAFETY LOCK
	CA1-6454-000	-	2	SCREW, AL COVER SHAFT
	CA1-6484-000(XXX)	E	1	SHAFT,FILM GUODE
	CA1-6485-000	E	1	INSULATOR
	CA1-7618-000	E	1	SPRING,PLATE
	CA1-7619-000	E	1	HOLDER,CASSETTE
	CA1-9002-000	D	1	SOCKET,TRIPOD
	CA1-9046-000	E	1	SHIELD,LIGHT
	CA1-9096-000	D	1	HOLDER,STRAP(LEFT)
	CA1-9104-000	D	1	PANEL,BLIND
	CA1-9112-000	D	1	CONTACT,BACK COVER SWITCH
	CA1-9113-000	D	1	CONTACT,BACK COVER SW GND
	CA1-9128-000	D	1	SPACER
	CA1-9403-000	-	1	SCREW, CROSS RECESS PH
	CA1-9427-000	-	2	SCREW, CROSS RECESS PH
	CG9-2670-000	D	1	AL COVER ASS'Y
	CS1-6535-000(XXX)	E	1	SPRING
	CY1-1759-000	E	1	BODY ASS'Y
	X99-0481-000	-	1	SCREW, CROSS RECESS PH
	XA1-1170-307	-	1	SCREW, CROSS RECESS PH
	XA4-1200-507	-	4	SCREW, CROSS RECESS PH
	XA4-9200-557	-	1	SCREW, CROSS RECESS PH
	XA4-9200-609	-	1	SCREW, CROSS RECESS PH

# CANON EOS-1N RS

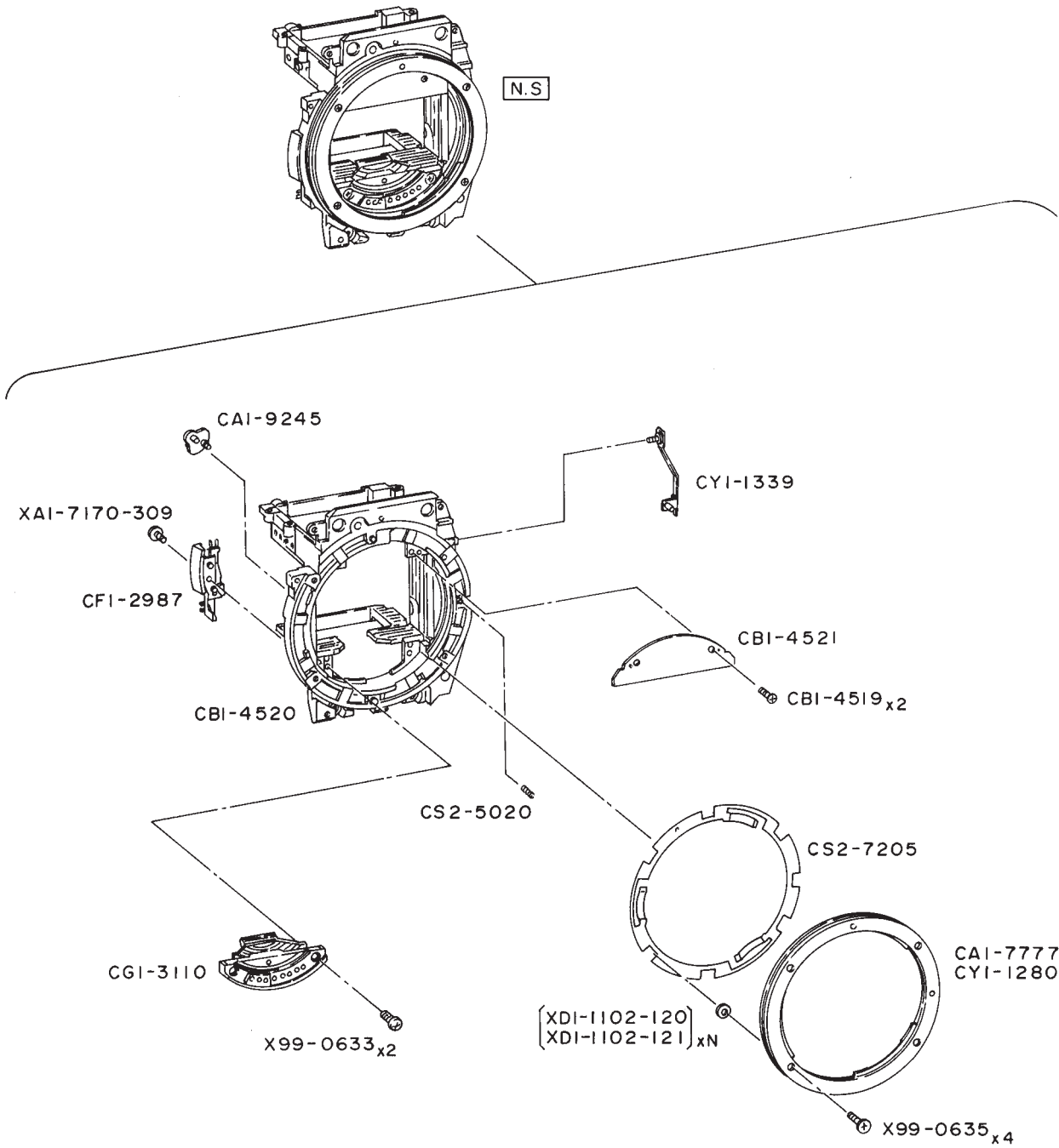


**PARTS LIST**

REF.No.C12-8311

NEW	PARTS NO.	CLASS	QTY	DESCRIPTION
	CG1-3125-000	C	1	PENTAPRISM UNIT
	CS2-6946-000	D	2	SPRING
	CY1-1694-000	D	1	LCD UNIT (HORIZONTAL)
	CY1-1695-000	D	1	LCD UNIT(VERTICAL)
	X91-1737-120	-	2	SCREW, CROSS RECESS PH
	YN2-9217-000	C	1	MASK,AF FRAME
	YN2-9159-000	C	1	SCREEN,FOCUSING

# CANON EOS-1N RS





# PARTS LIST

REF.No.C12-8311

NEW	PARTS NO.	CLASS	QTY	DESCRIPTION
	CA1-7777-000	C	1	MOUNT,BODY
	CA1-9245-000	E	1	LEVER, SENSOR
	CB1-4519-000	-	2	SCREW, CROSS RECESS PH
	CB1-4520-000	D	1	BOX,MIRROR
	CB1-4521-000	D	1	PLATE,LIGHT SHIELD
	CF1-2987-000	D	1	SWITCH, LENS
	CG1-3110-000	E	1	MOUNT CONTACT ASS'Y
	CS2-5020-000	E	1	SPRING,COIL
	CS2-7205-000	D	1	SPRING,MOUNT
	CY1-1280-000	E	1	MOUNT,BODY
	CY1-1339-000	E	1	LOCK PIN UNIT
	X99-0633-000	-	2	SCREW, CROSS RECESS PH
	X99-0635-000	-	4	SCREW, CROSS RECESS PH
	XA1-7170-309	-	1	SCREW, CROSS RECESS PH
	XD1-1102-120	-	1	WASHER
	XD1-1102-121	-	1	SHIM,WASHER

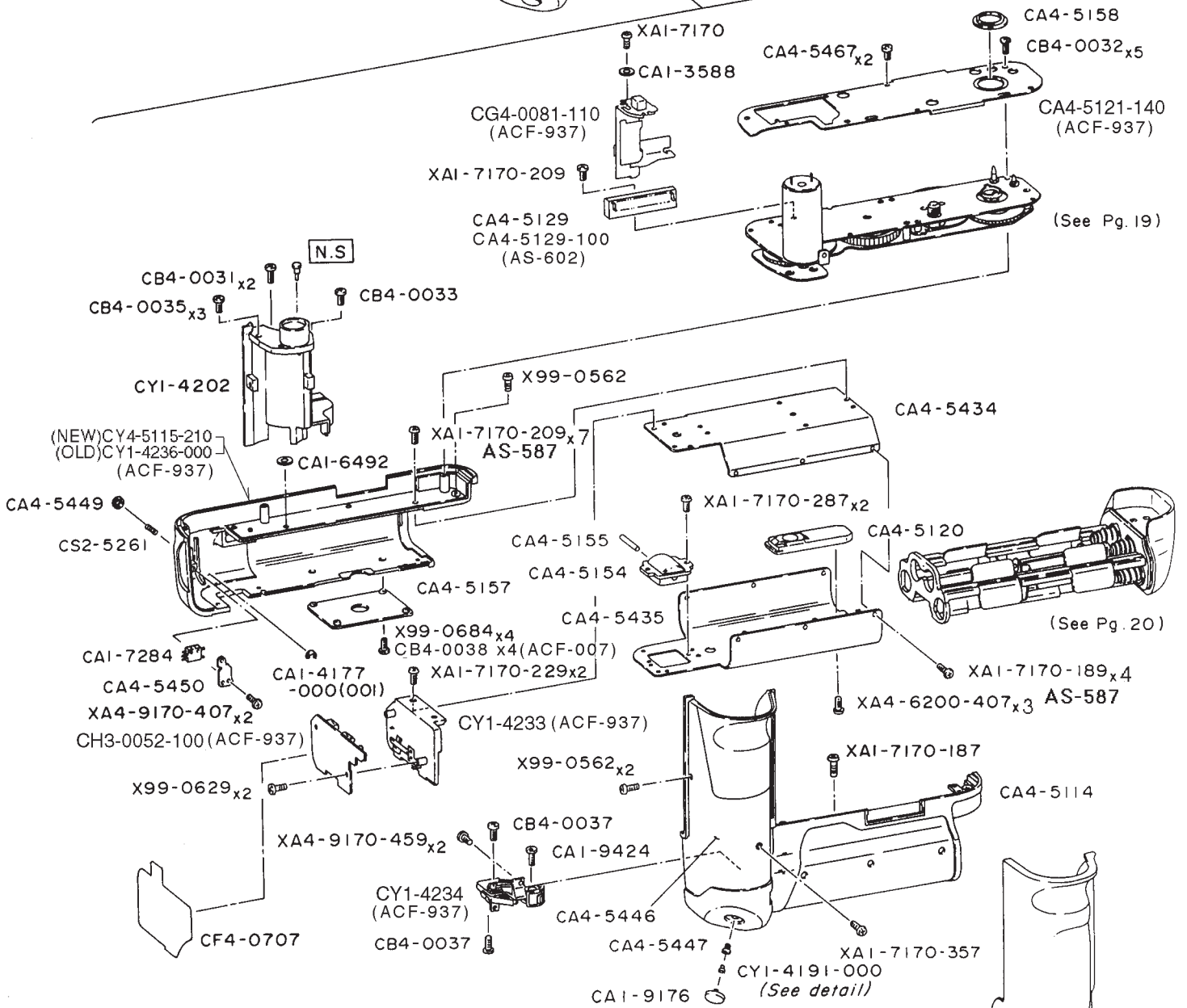
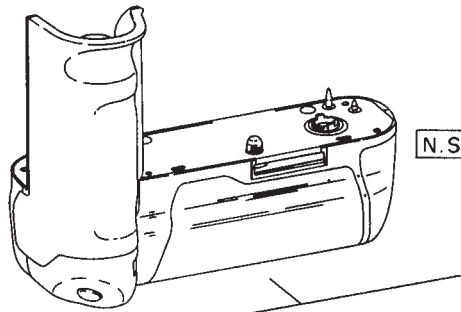


**PARTS LIST**

REF.No.C12-8311

NEW	PARTS NO.	CLASS	QTY	DESCRIPTION
	CG1-3034-070	C	1	SHUTTER UNIT
	CY2-5047-000	F	2	SCREW, CROSS RECESS PH
	CY2-5064-000	C	2	SHUTTER CURTAIN ASS'Y
	CY2-5065-000	E	1	SPRING
	CY2-5066-000	E	1	SPRING

# CANON EOS-1N RS



CYI-4191-000 detail (STANDARD)

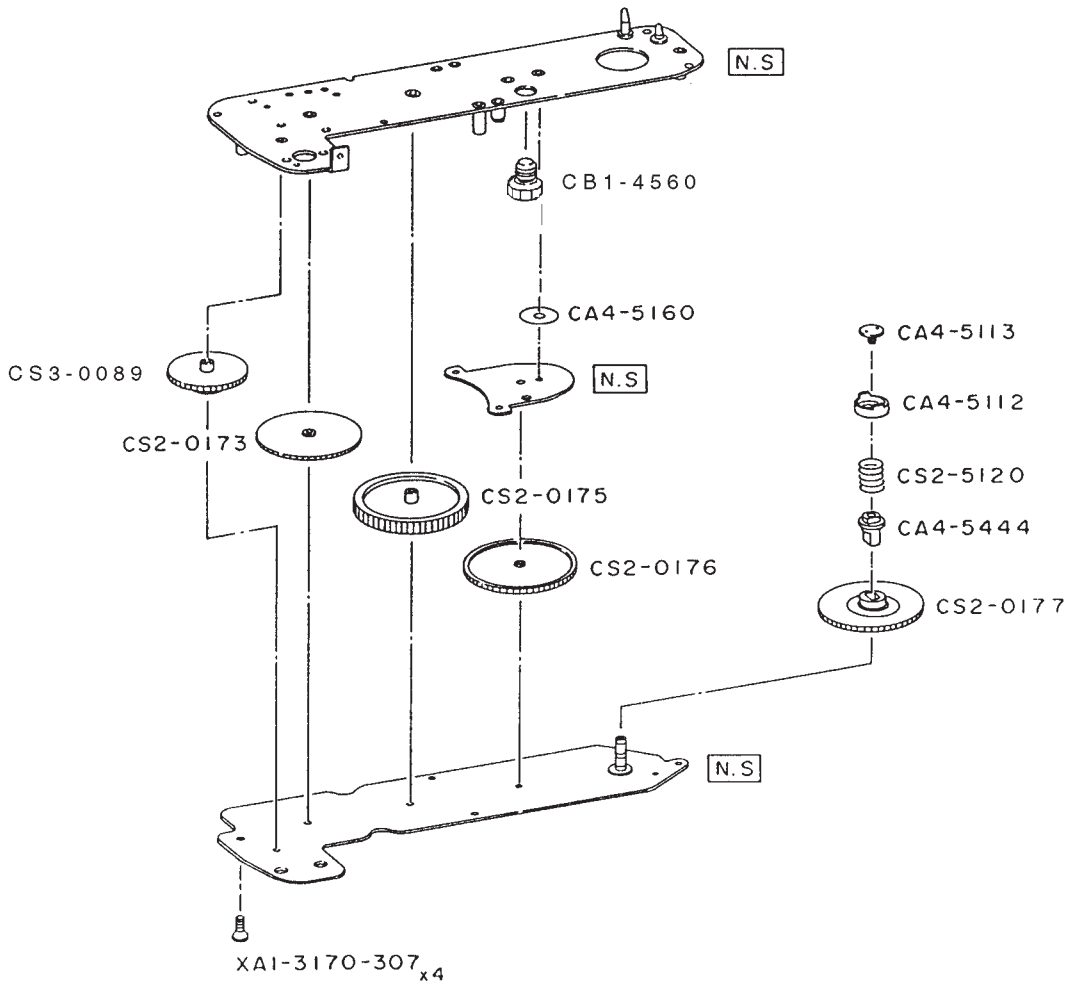
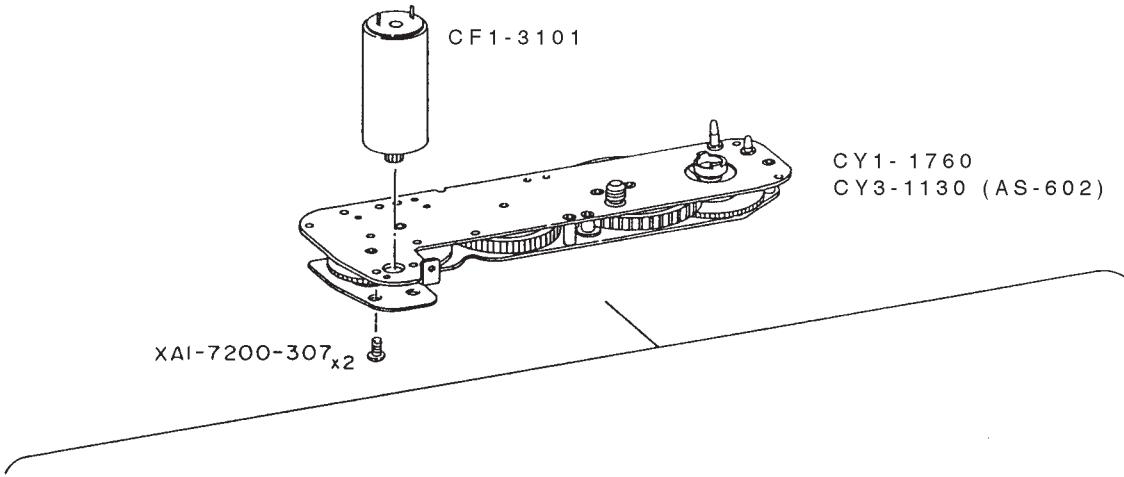
A B	A	B	SIZE	A	B	SIZE	A	B	SIZE
	* 1.0mm	1.2mm	(OO1)	1.5mm	1.2mm	(OO3)	2.0mm	1.2mm	(OO5)
	1.4mm	(OO2)		1.4mm	(OO4)		1.4mm	(OO6)	

# PARTS LIST

REF.No.C12-8311

NEW	PARTS NO.	CLASS	QTY	DESCRIPTION
	CA1-3588-000	D	1	WASHER
	CA1-4177-000(001)	D	1	RING,C
	CA1-6492-000	D	1	WASHER
	CA1-7284-000	D	1	SWITCH,MD AE LOCK
	CA1-9176-000	C	1	BUTTON,RELEASE
	CA1-9424-000	-	1	SCREW,CROSS-RECESS,PH
	CA4-5114-000	D	1	CASE,A MD
	CA4-5115-210	D	1	CASE,B MD (NEW)
	CA4-5118-000	C	1	COVERING
	CA4-5120-000	D	1	TRIPOD,MD
	CA4-5121-140	C	1	PANEL,MD
	CA4-5122-000	C	1	COVERING
	CA4-5129-000	D	1	CONTACT ASS'Y
	CA4-5129-100	D	1	CONTACT ASS'Y
	CA4-5154-000	D	1	HOLDER,STRAP
	CA4-5155-000	D	1	SHAFT,STRAP HOLDER
	CA4-5157-000	D	1	BASE,TRIPOD
	CA4-5158-000	D	1	RING,WATER PROOF
	CA4-5434-000	D	1	PLATE,REINFORCEMENT U
	CA4-5435-000	D	1	PLATE,REINFORCEMENT L
	CA4-5446-000	C	1	TAPE,DOUBLE SIDED
	CA4-5447-000	E	1	SHAFT,MD RELEASE
	CA4-5449-000	E	1	BUTTON,AE LOCK
	CA4-5450-000	E	1	HOLDER, AE LOCK
	CA4-5467-000	-	2	SCREW,CROSS-RECESS,PH
	CB4-0031-000	-	2	SCREW,CROSS-RECESS,PH
	CB4-0032-000	-	5	SETSCREW,SLOTTED
	CB4-0033-000	-	1	SCREW,CROSS-RECESS,PH
	CB4-0035-000	-	3	SCREW,CROSS-RECESS,PH
	CB4-0037-000	-	2	SCREW,CROSS-RECESS,PH
	CB4-0038-000	F	4	SCREW,CROSS-RECESS,PH
	CF4-0707-000	D	1	FPC,SHIELD
	CG4-0081-110	D	1	MD-FLEX UNIT
	CH3-0052-100	E	1	DC/DC CONVERTER 2
	CS2-5261-000	D	1	SPRING,MD-AEL
	CY1-4191-000(XXX)	E	1	SHAFT,ADJUSTING
	CY1-4202-000	E	1	GRIP COVER UNIT
	CY1-4233-000	E	1	RESET HOLDER UNIT
	CY1-4234-000	E	1	SWITCH BASE UNIT
	CY1-4236-000	D	1	CASE,B MD (OLD)
	X99-0562-000	-	3	SCREW, CROSS RECESS PH
	X99-0629-000	-	2	SCREW, CROSS RECESS PH
	X99-0684-000	-	4	SCREW, CROSS RECESS PH
	XA1-7170-189	-	4	SCREW, CROSS RECESS PH
	XA1-7170-207	-	1	SCREW, CROSS RECESS PH
	XA1-7170-209	-	7	SCREW, CROSS RECESS PH
	XA1-7170-229	-	13	SCREW, CROSS RECESS PH
	XA1-7170-287	-	2	SCREW, CROSS RECESS PH
	XA1-7170-357	-	1	SCREW, CROSS RECESS PH
	XA4-6200-407	-	3	SCREW, CROSS RECESS PH
	XA4-7170-187	-	1	SCREW, CROSS RECESS PH
	XA4-9170-407	-	2	SCREW, CROSS RECESS PH
	XA4-9170-459	-	2	SCREW, CROSS RECESS PH

# CANON EOS-1N RS

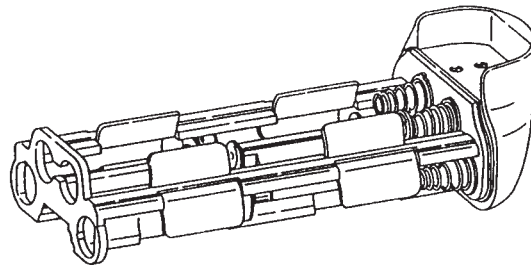


# PARTS LIST

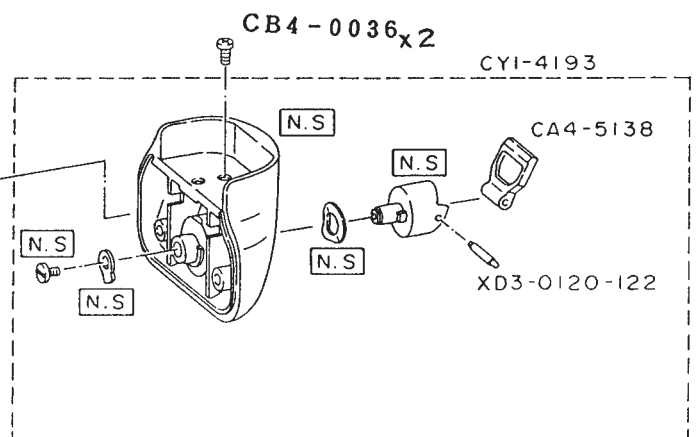
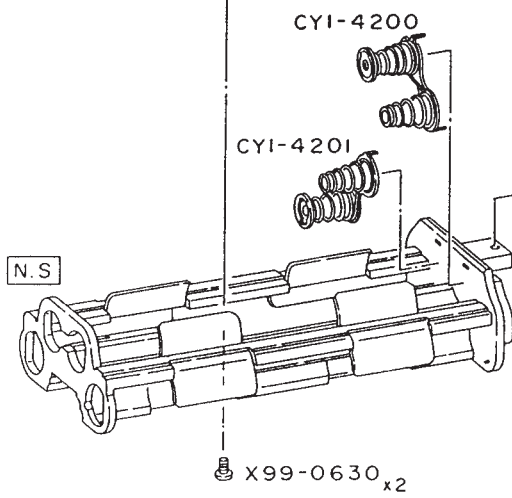
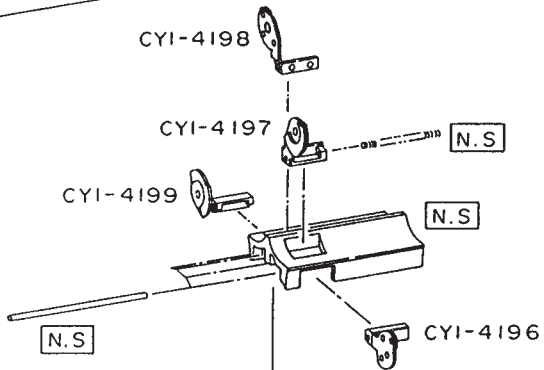
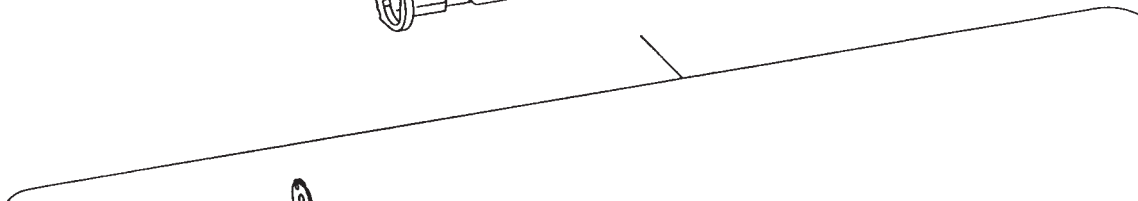
REF.No.C12-8311

NEW	PARTS NO.	CLASS	QTY	DESCRIPTION
	CA4-5112-000	D	1	COUPLER,MD
	CA4-5113-000	D	1	SCREW,PIN FACE
	CA4-5160-000	D	1	WASHER
	CA4-5444-000	D	1	SHAFT,COUPLER
	CB1-4560-000	D	1	SCREW,TRIPOD
	CF1-3101-000	D	1	MOTOR UNIT
	CS2-0173-000	E	1	GEAR,H
	CS2-0175-000	E	1	GEAR, A IDLER
	CS2-0176-000	E	1	GEAR B,IDLER
	CS2-0177-000	E	1	GEAR,COUPLER
	CS2-5120-000	D	1	SPRING,COUPLER
	CS3-0089-000	E	1	GEAR,SUN
	CY1-1760-000	D	1	CHARGE UNIT
	CY3-1130-000	D	1	CHARGE UNIT
	XA1-3170-307	-	4	SCREW, CROSS RECESS PH
	XA1-7200-307	-	2	SCREW, CROSS RECESS PH

# CANON EOS-1N RS



CY1-4235 (ACF-937)





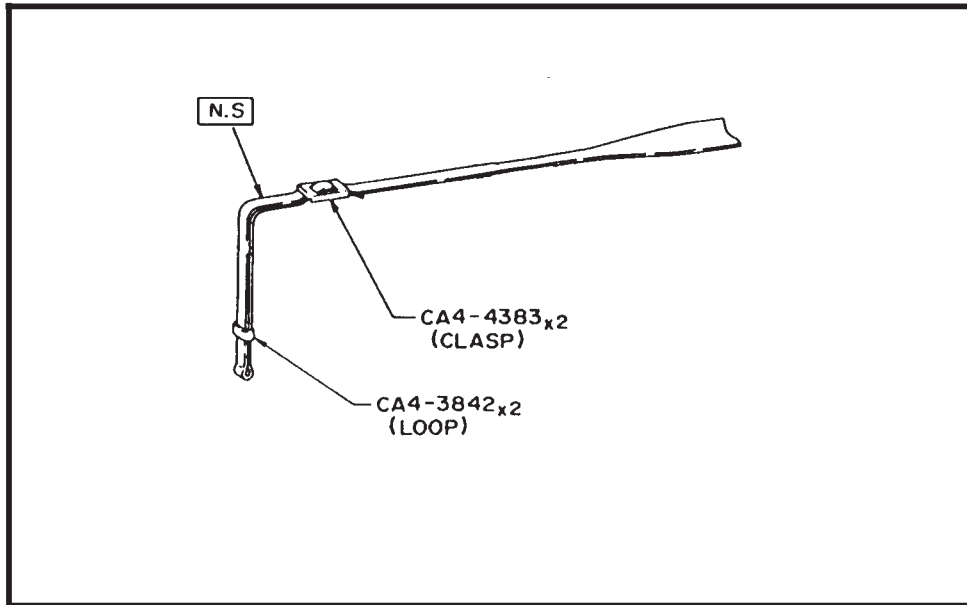
**PARTS LIST**

REF.No.C12-8311

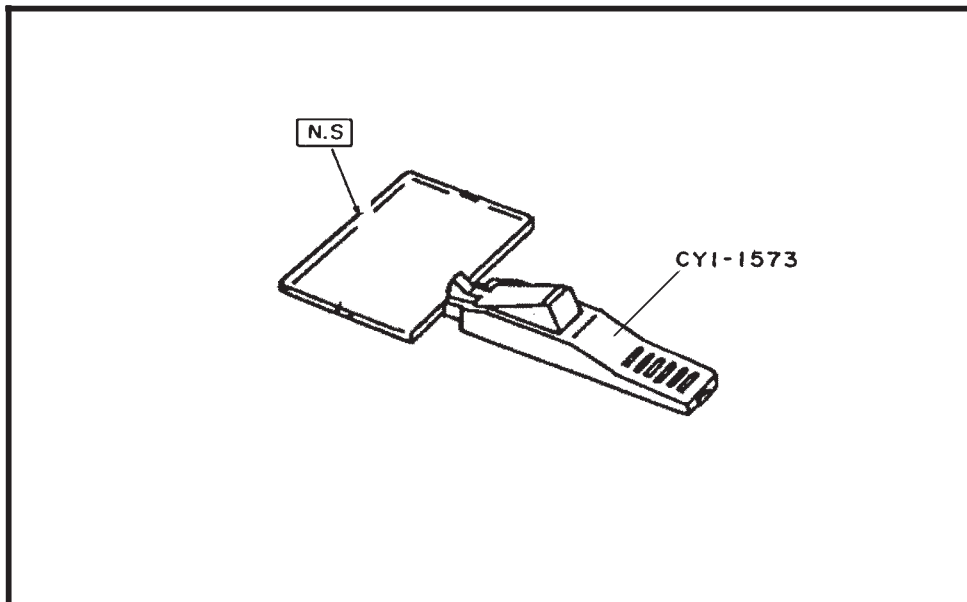
NEW	PARTS NO.	CLASS	QTY	DESCRIPTION
	CA4-5138-000	D	1	KNOB,BATTERY MAGAZINE
	CB4-0036-000	-	2	SCREW, CROSS RECESS PH
	CY1-4193-000	C	1	BATTERY COVER UNIT
	CY1-4196-000	D	1	MIDDLE CONTACT UNIT A
	CY1-4197-000	D	1	MIDDLE CONTACT UNIT B
	CY1-4198-000	D	1	MIDDLE CONTACT UNIT C
	CY1-4199-000	D	1	MIDDLE CONTACT UNIT D
	CY1-4200-000	C	1	BATTERY CONTACT UNIT A
	CY1-4201-000	D	1	BATTERY CONTACT UNIT B
	CY1-4235-000	D	1	BATTERY HOLDER UNIT
	X99-0630-000	-	2	SCREW, CROSS RECESS PH
	XD3-0120-122	-	1	PIN, SPRING

CANON Acc.

NECK STRAP L3



FOCUSING SCREEN EC-C



**NECK STRAP L3**

REF.NO.C56-1421-001

NEW	PARTS NO.	CLASS	QTY	DESCRIPTION
	C56-1421-001	D	1	NECK STRAP L3
	CA4-3842-000	D	2	LOOP
	CA4-4383-000	D	2	CLASP

**FOCUSING SCREEN EC-C**

REF.NO.C51-9953

NEW	PARTS NO.	CLASS	QTY	DESCRIPTION
	CY1-1573-000	D	1	TOOL, FOCUSING SCREEN

# ELECTRIC PARTS LIST

REF.No.C12-8311

NEW	SYMBOL	PARTS NO.	DESCRIPTION	REMARK
	BXTAL	WK2-0188-000	XTAL(32.76KHz)	DS-VT200
	FUSE	WD8-5050-000(200)	FUSE	JAA-5002-501
	LCD Dr.	CH4-0514-000	LCD DRIVER IC	SN28899
	MTDR1	CH4-0159-000	MOTOR DRIVER1	T8120
	MTDR2	WA4-6332-000	MOTOR DRIVER2	MPC17A10SVM
	TMOS	CH4-0213-000	TMOS	SFX10
	XTAL	WK2-0188-000	XTAL(32.76KHz)	DS-VT200
		CH2-2777-000	FLAT TWIN LEADS	RED / WHITE
		CH2-2796-000	SHIELDED LEADS	BLACK / WHITE
		CH2-4173-000	FLAT TWIN LEADS	RED / WHITE
		CH2-4174-000	FLAT TWIN LEADS	RED / WHITE
		CH2-4176-000	SHIELDED LEADS	BLACK / WHITE
		Y11-3704-000	LEAD	PINK
		Y11-3706-000	LEAD	ORANGE
		Y11-3712-000	LEAD	PURPLE
		Y11-3901-000	LEAD	WHITE
		Y11-3902-000	LEAD	BLACK
		Y11-3903-000	LEAD	RED
		Y11-3904-000	LEAD	PINK
		Y11-3906-000	LEAD	ORANGE
		Y11-3907-000	LEAD	YELLOW
		Y11-3909-000	LEAD	GREEN
		Y11-3911-000	LEAD	BLUE
		Y11-3912-000	LEAD	PURPLE
		Y11-3913-000	LEAD	BROWN
		Y11-3914-000	LEAD	GLAY
		Y11-4402-000	LEAD	BLACK
		Y11-4403-000	LEAD	RED
		Y11-4506-000	LEAD	ORANGE
		Y11-4511-000	LEAD	BLUE
		Y11-4514-000	LEAD	GLAY
		Y11-5002-000	LEAD	BLACK
		Y11-5003-000	LEAD	RED
		Y11-5006-000	LEAD	ORANGE
		Y11-5007-000	LEAD	YELLOW
		Y11-5012-000	LEAD	PURPLE
		Y11-5014-000	LEAD	GLAY